

RAS
EL HEKMA

safia

المسبة والظهور

IL CAZAR





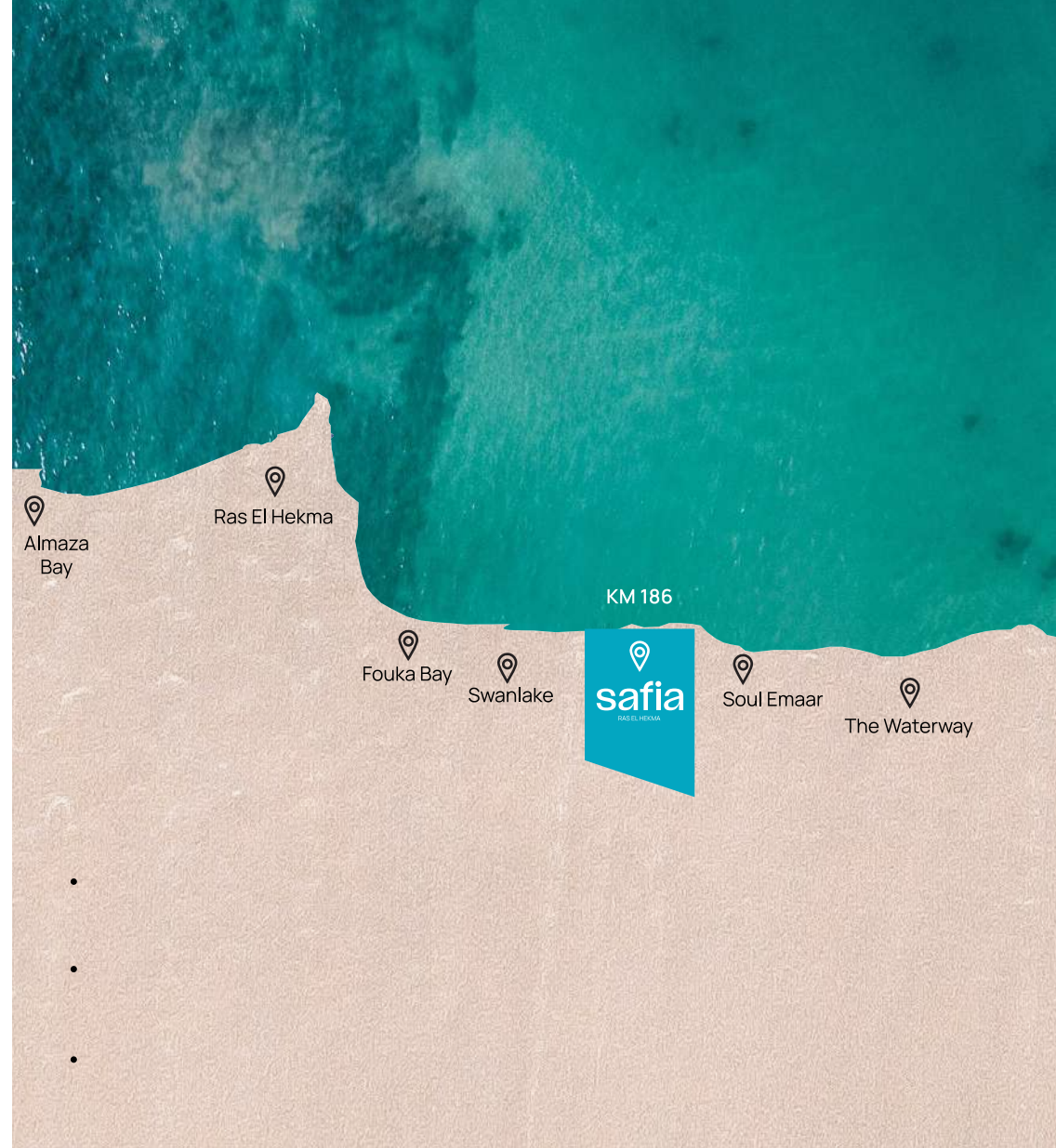
OUR STORY

Il Cazar represents a significant step towards launching new projects following Creek Town, Go Heliopolis and The Crest, ensuring branded projects with international standards down to every detail.

Our aim is to lead and shape the real estate industry reflected by our selective luxurious projects. Il Cazar's aim is to positively impact the community by contributing to the real estate industry in Egypt and always working on enhancing the standards in the market by providing grade A quality development projects.

LOCATION

Safia is strategically located on KM186 on the shores of Ras El Hekma. 2:30 hrs away from Cairo Alex Desert Road, 30 mins away from Alamein International Airport and 20 mins away from El Dabaa Axis.



MASTERPLAN

Spanning across 180 Acres, Safia offering a wide variety of unit types; one storey signatures villas, standalone villas, twin villas, townhouses, duplexes and chalets. Spreading over a 750 meters sandy beachfront with 1500 meters project depth.

Designed by Raef Fahmi Architects, the project promises a full sea view units including 9 rows of villas within walking distance to the beach and project amenities with only 600 meters depth. Safia offers a wide range of facilities; swimming pools, hotel & serviced units, water sports & beach activities, restaurants & commercial outlets, sports facilities, fully equipped gym and on-ground facility management.





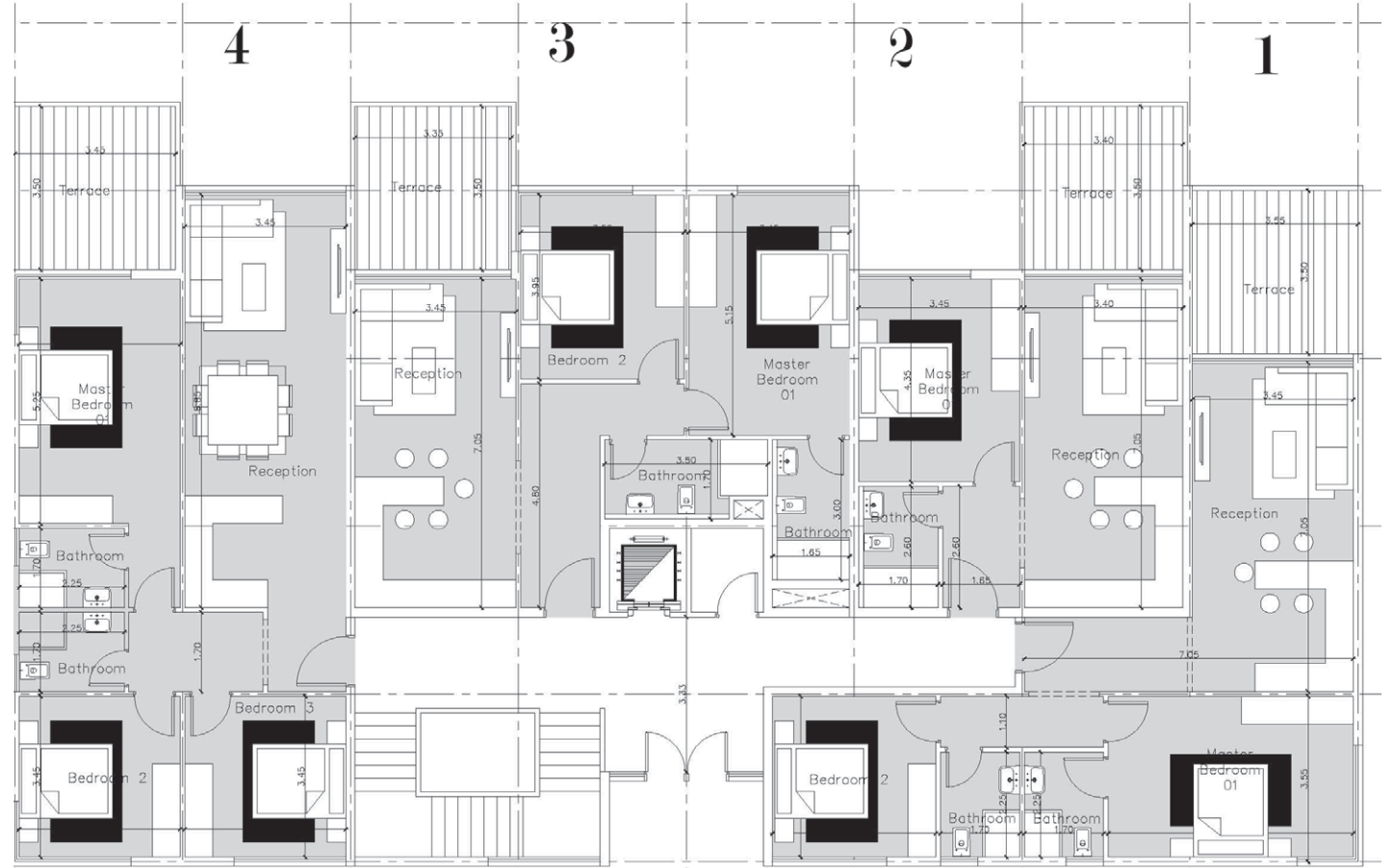
CHALETS FLOOR PLANS



CHALETS - BUILDING (A) - G+3

Ground & Typical Floors

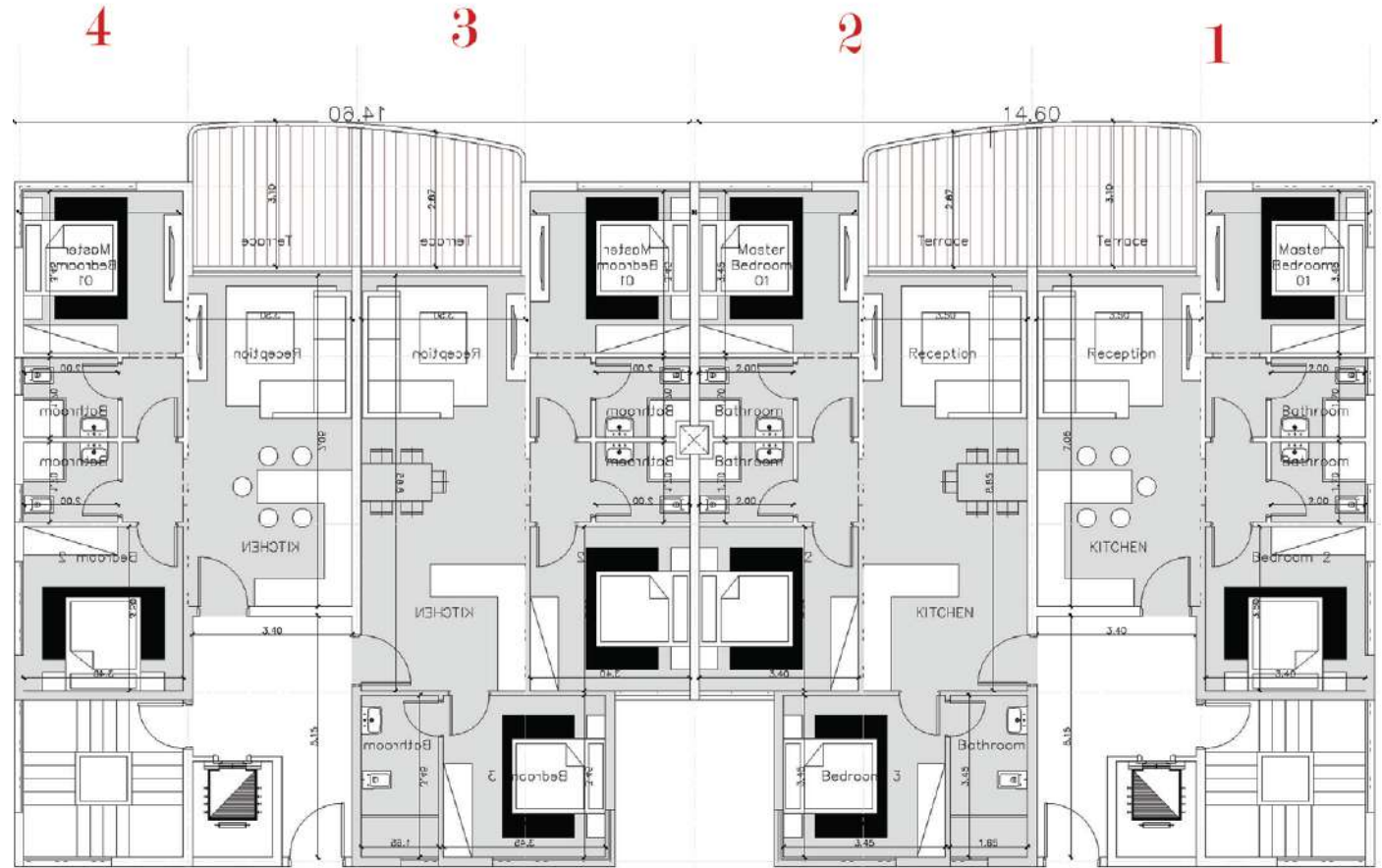
- Unit 01 - 2 BRs (125m²)
- Unit 02 - 1 BRs (80m²)
- Unit 03 - 2 BRs (130m²)
- Unit 04 - 3 BRs (148m²)



CHALETS - BUILDING (B) - G+4

Ground Floor

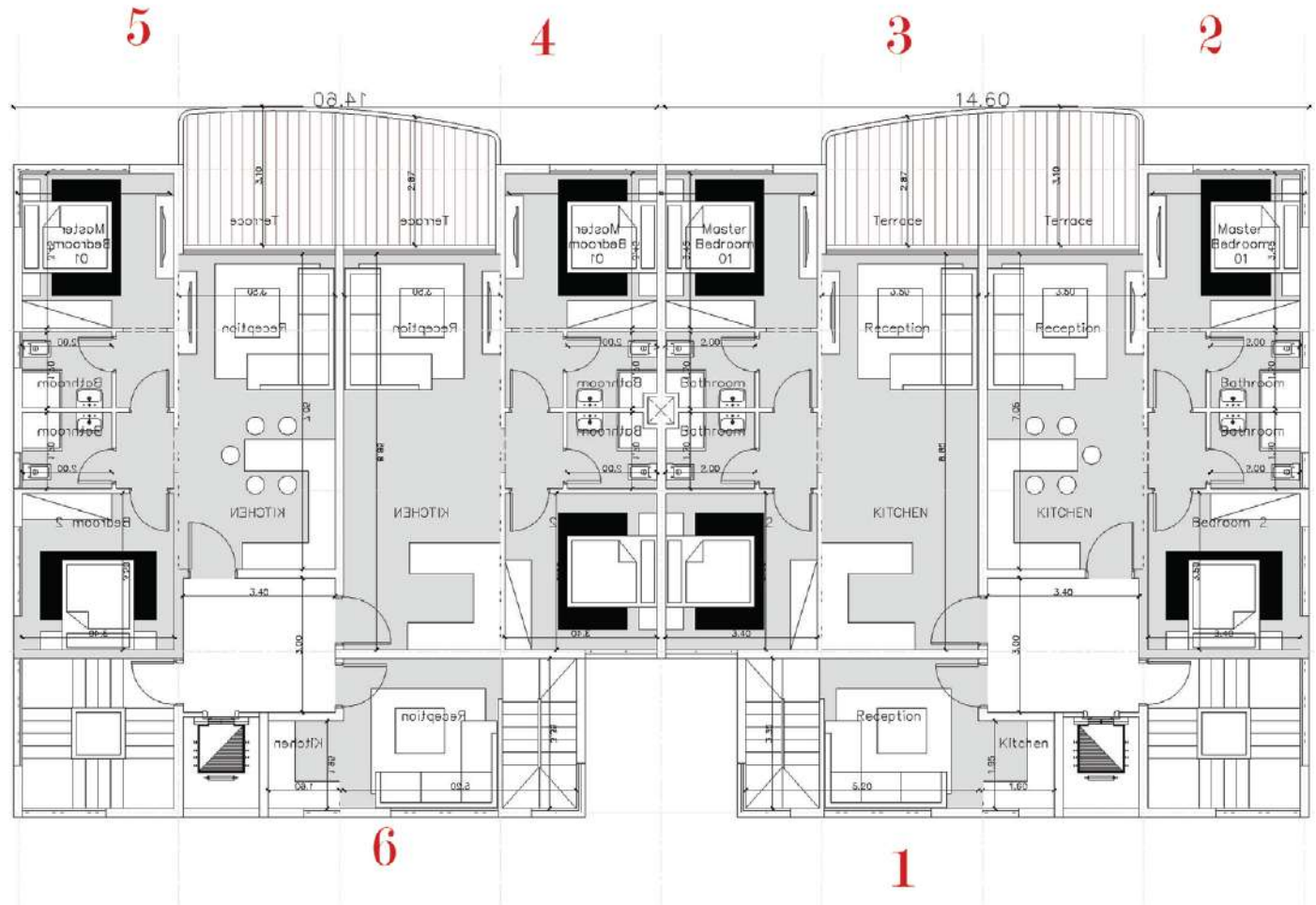
- Unit 01 - 2 BRs (105m²)
- Unit 02 - 3 BRs (135m²)
- Unit 03 - 3 BRs (135m²)
- Unit 04 - 2 BRs (105m²)



CHALETS - BUILDING (B) - G+4

First & Third Floors

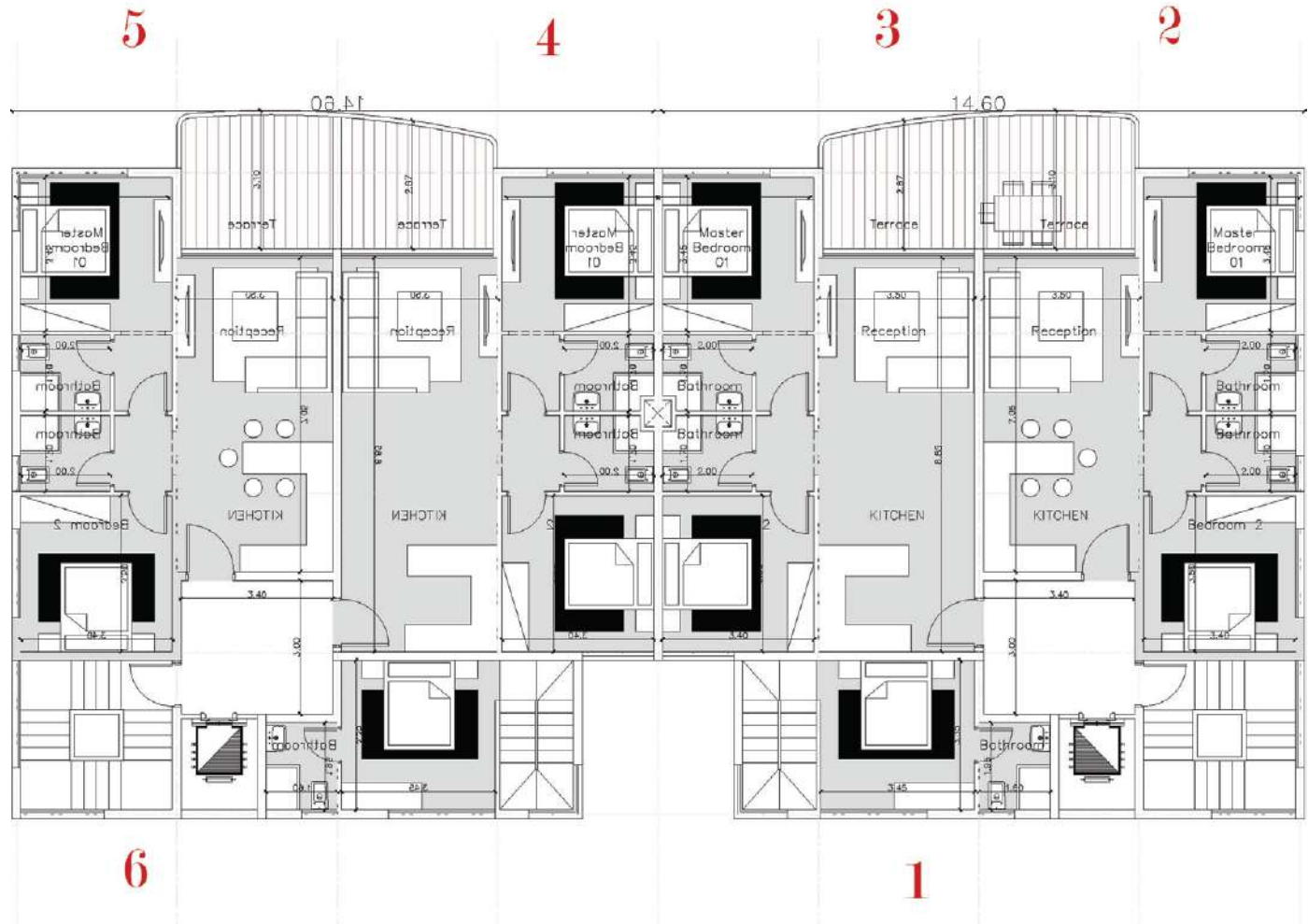
- Unit 01 - 1 BRs (65m²)
- Unit 02 - 2 BRs (105m²)
- Unit 03 - 2 BRs (110m²)
- Unit 04 - 2 BRs (110m²)
- Unit 05 - 2 BRs (105m²)
- Unit 06 - 1 BRs (65m²)



CHALETs - BUILDING (B) - G+4

Second & Fourth Floors

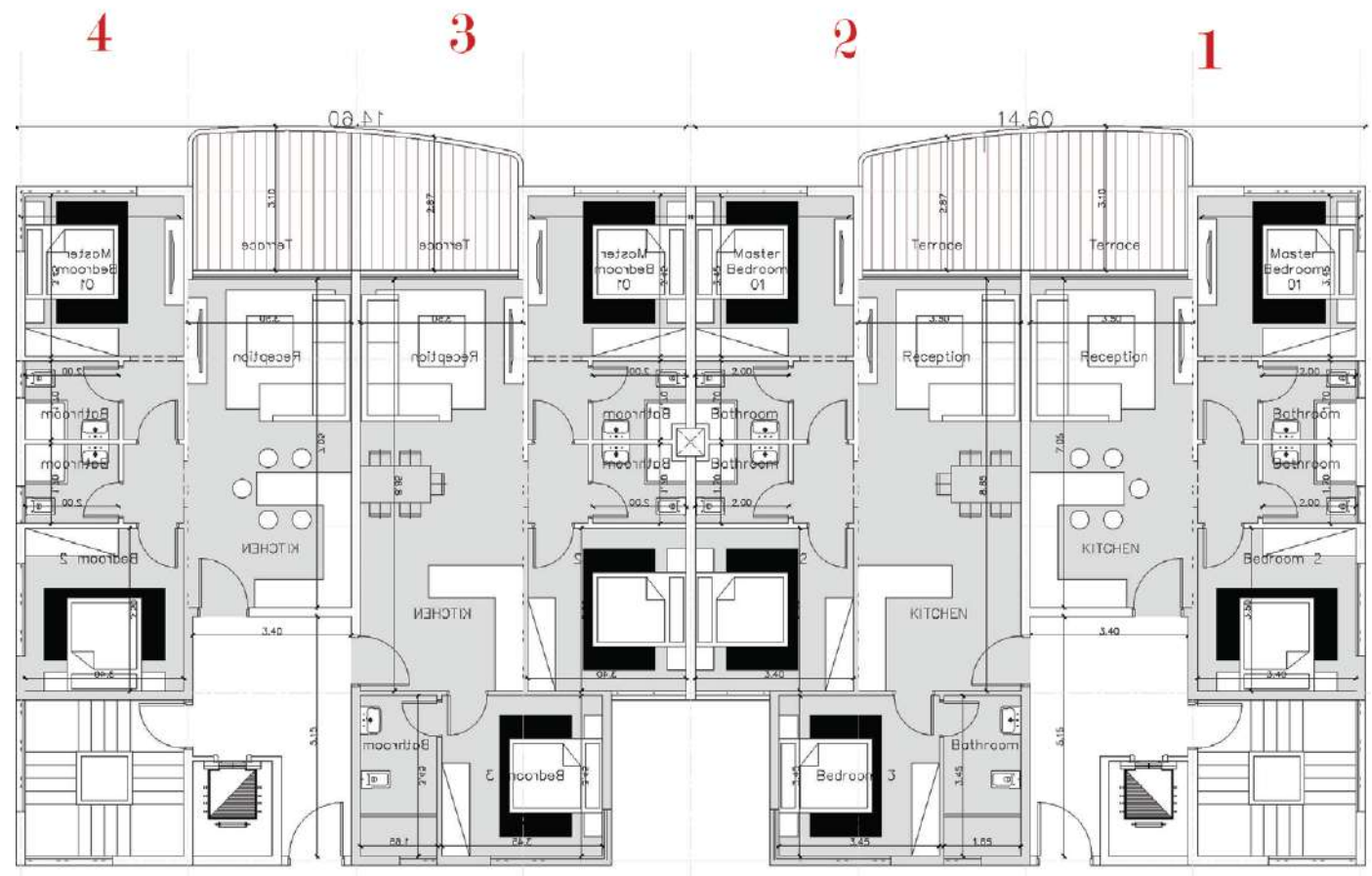
- Unit 01 - 1 BRs
- Unit 02 - 2 BRs (105m²)
- Unit 03 - 2 BRs (110m²)
- Unit 04 - 2 BRs (110m²)
- Unit 05 - 2 BRs (105m²)
- Unit 06 - 1 BRs



CHALETS - BUILDING (C) - G+3

Ground & Typical Floors

- Unit 01 - 2 BRs (105m²)
- Unit 01 - 3 BRs (135m²)
- Unit 01 - 3 BRs (135m²)
- Unit 01 - 2 BRs (105m²)



An aerial photograph of the ocean with vibrant turquoise and teal water. The surface is covered in small, shimmering ripples and waves. In the center, the word "safia" is written in a clean, white, lowercase sans-serif font. Below it, the words "RAS EL HEKMA" are written in a smaller, white, uppercase sans-serif font.

safia

RAS EL HEKMA