

S

N

E

E

R

G



Building 1











# Numbered Masterplan



G

R

E

# GREENS

RESIDENCES

FLOORPLANS

E

N

S

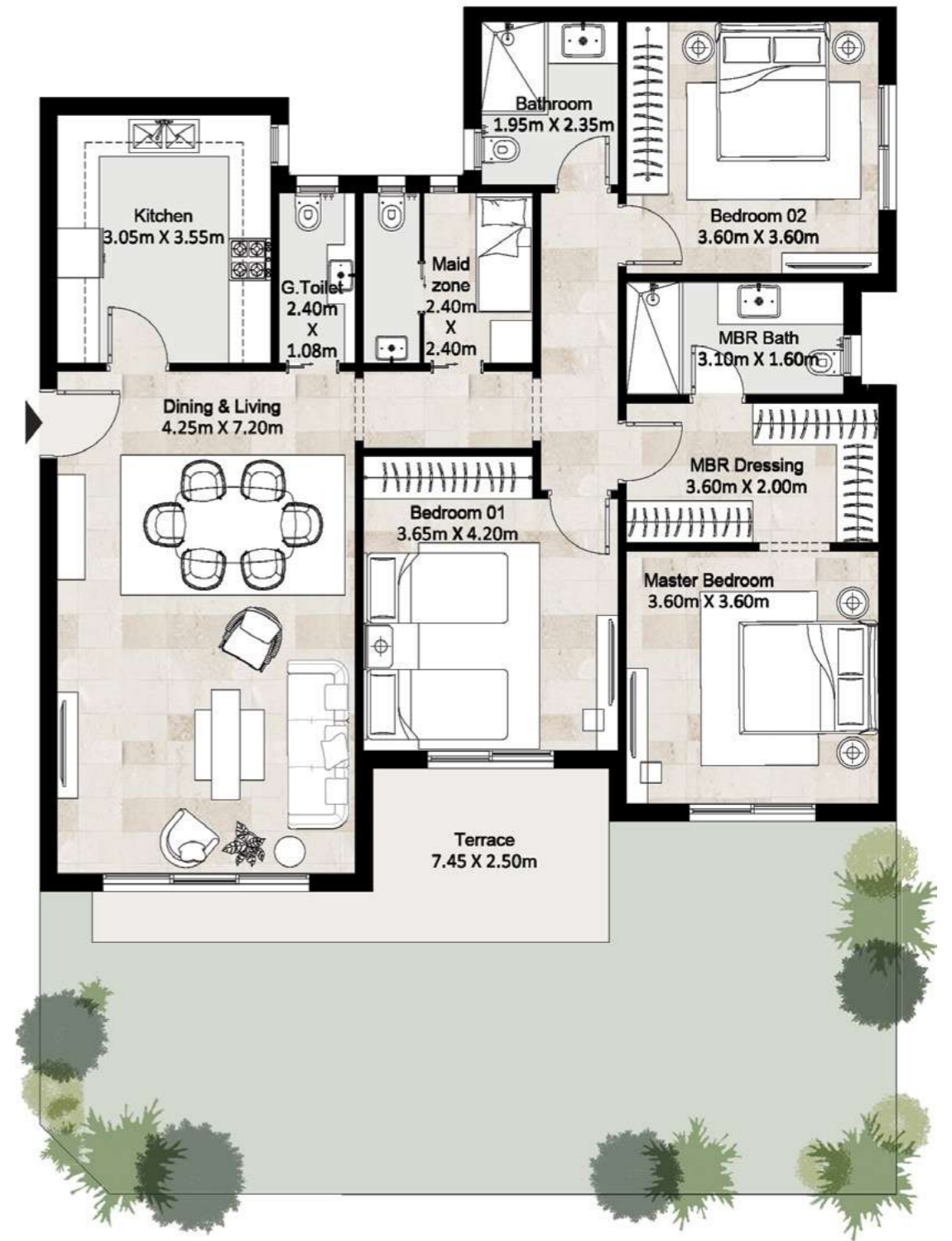


# Apartment 1

## Ground Floor

**Total Area** 159 m<sup>2</sup>

Dining And Living	4.25 x 7.20m
Guest Toilet	1.08 x 2.40 m
Kitchen	3.05 x 3.55 m
Maid Zone	2.40 x 2.40 m
Master Bedroom	3.60 x 3.60 m
Master Bathroom	3.10 x 1.60 m
Dressing	3.60 x 2.00 m
Bedroom 1	3.65 x 4.20 m
Bedroom 2	3.60 x 3.60 m
Bathroom	1.95 x 2.35 m
Terrace	7.45 x 2.50 m



Ground Floor

**Disclaimer**

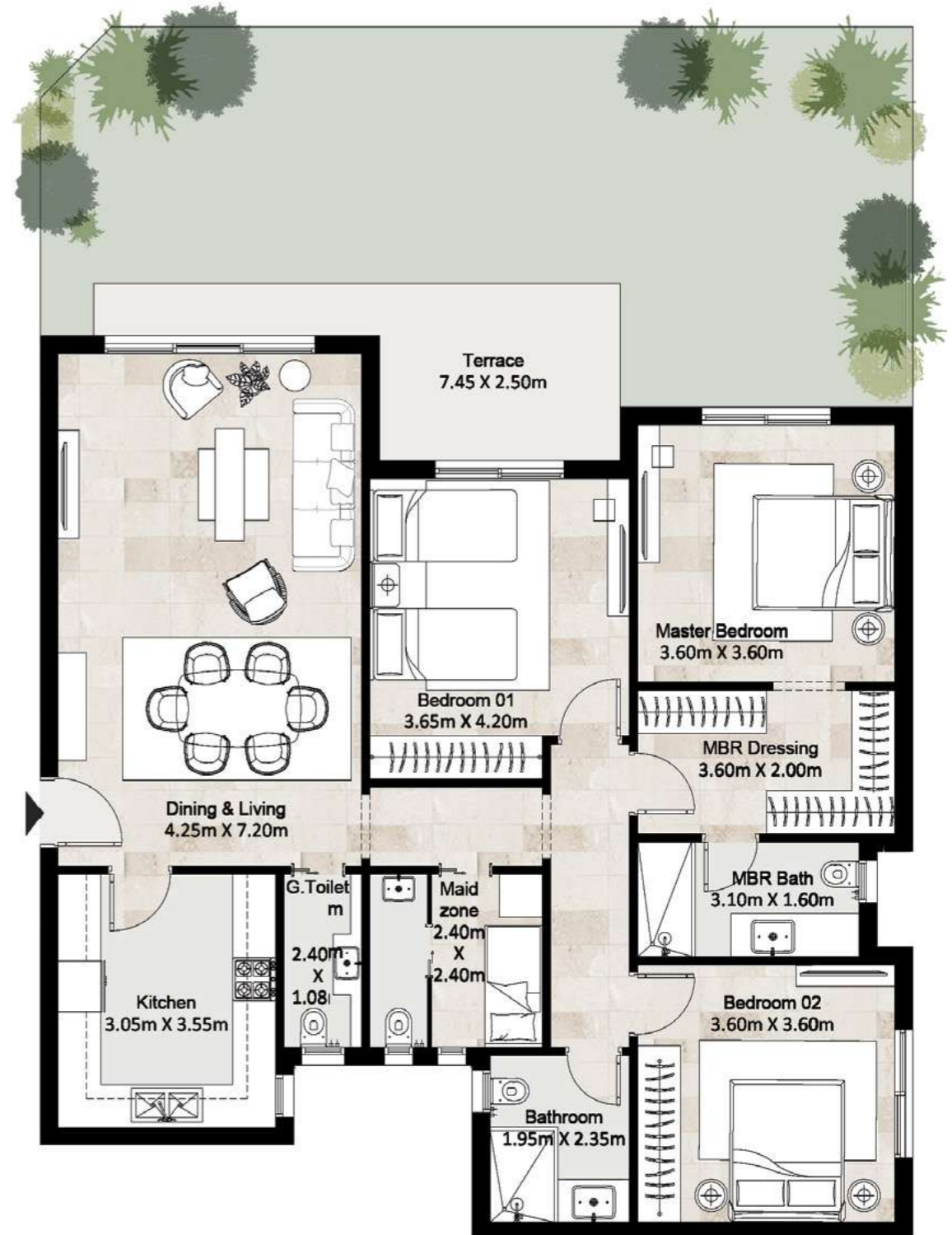
Diagrams are not to scale and are for illustrative purposes only. All renderings and landscaping visuals, materials, and facades are for indicative purposes only and subject to change. Actual areas may vary from the stated figures. All dimensions are measured to structural elements. HYDE PARK reserves the right to make non-fundamental changes to the design provided herein without prior notice.

# Apartment 2

## Ground Floor

**Total Area** 159 m<sup>2</sup>

Dining And Living	4.25 x 7.20m
Guest Toilet	1.08 x 2.40 m
Kitchen	3.05 x 3.55 m
Maid Zone	2.40 x 2.40 m
Master Bedroom	3.60 x 3.60 m
Master Bathroom	3.10 x 1.60 m
Dressing	3.60 x 2.00 m
Bedroom 1	3.65 x 4.20 m
Bedroom 2	3.60 x 3.60 m
Bathroom	1.95 x 2.35 m
Terrace	7.45 x 2.50 m



Ground Floor

**Disclaimer**

Diagrams are not to scale and are for illustrative purposes only. All renderings and landscaping visuals, materials, and facades are for indicative purposes only and subject to change. Actual areas may vary from the stated figures. All dimensions are measured to structural elements. HYDE PARK reserves the right to make non-fundamental changes to the design provided herein without prior notice.

# Apartment 3

## Ground Floor

**Total Area** 75 m<sup>2</sup>

Reception	4.40 x 4.70 m
Kitchen	3.05 x 2.70 m
Master Bedroom	3.80 x 3.60 m
Bathroom	2.60 x 1.70 m
Terrace	3.30 x 1.40 m



Ground Floor

**Disclaimer**

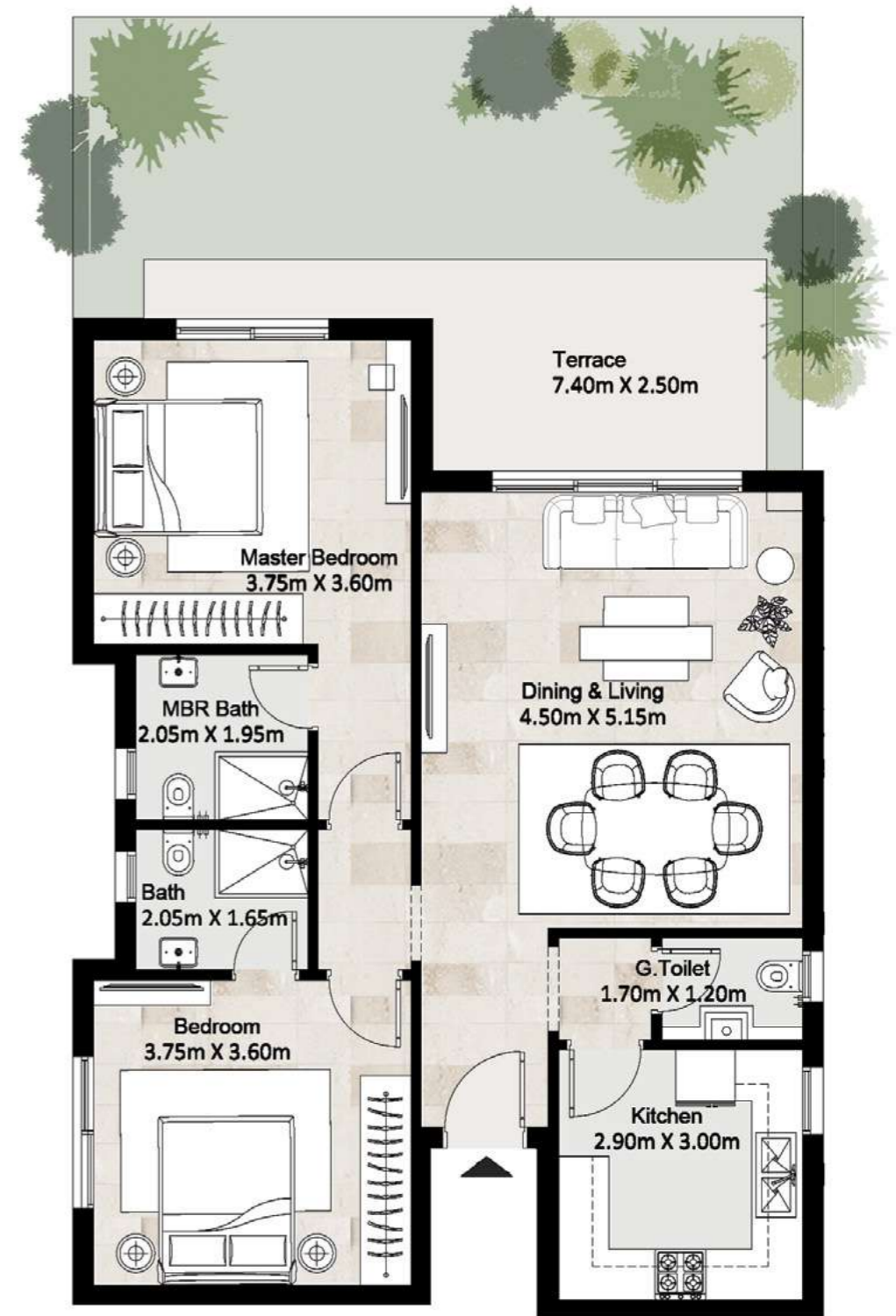
Diagrams are not to scale and are for illustrative purposes only. All renderings and landscaping visuals, materials, and facades are for indicative purposes only and subject to change. Actual areas may vary from the stated figures. All dimensions are measured to structural elements. HYDE PARK reserves the right to make non-fundamental changes to the design provided herein without prior notice.

# Apartment 4

## Ground Floor

**Total Area** 111 m<sup>2</sup>

Dining And Living	4.50 x 5.15 m
Guest Toilet	1.70 x 1.20 m
Kitchen	2.90 x 3.00 m
Master Bedroom	3.75 x 3.60 m
Master Bathroom	2.05 x 1.95m
Bedroom 1	3.75 x 3.60 m
Bathroom	2.05 x 1.65 m
Terrace	7.40 x 2.50 m



Ground Floor

**Disclaimer**

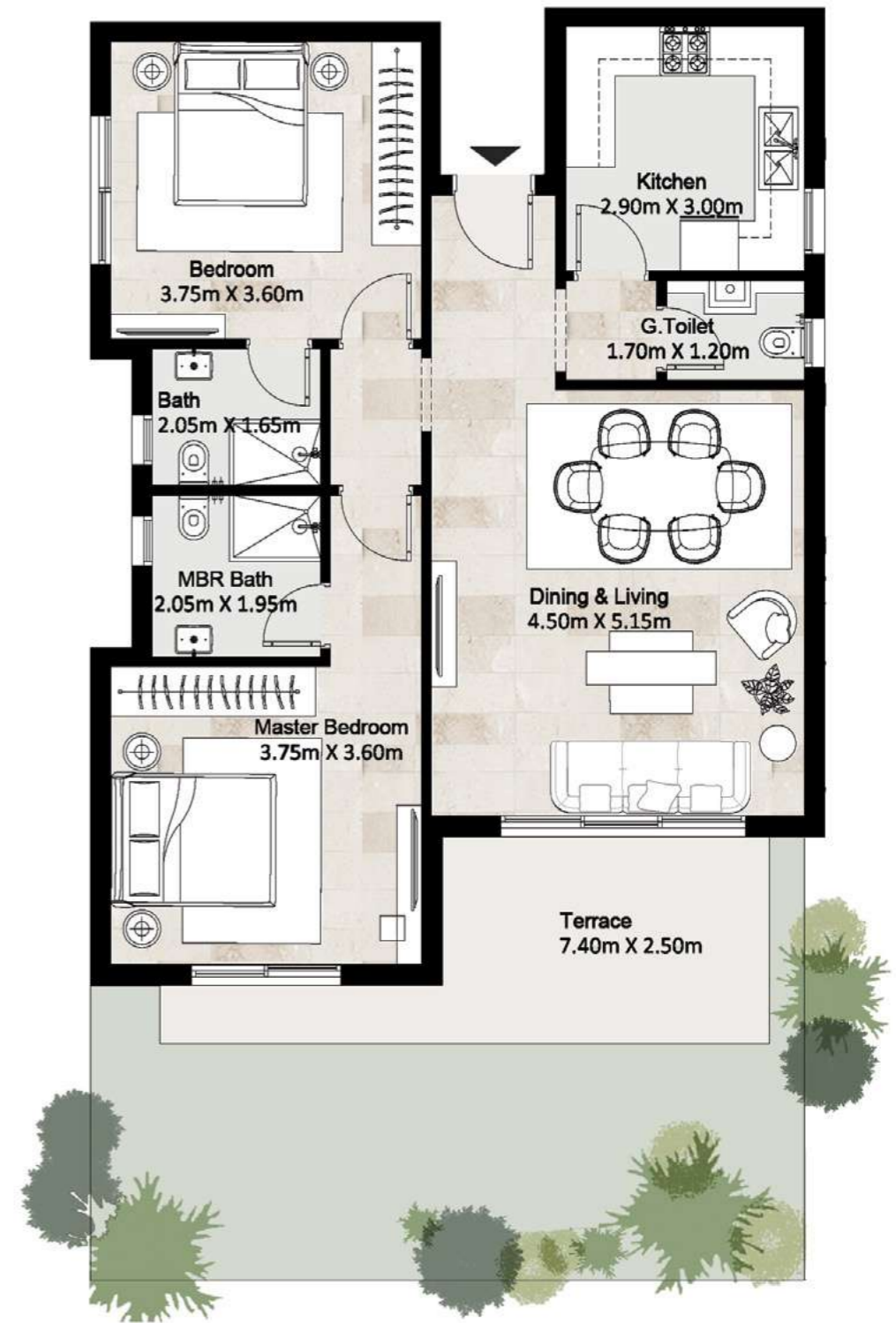
Diagrams are not to scale and are for illustrative purposes only. All renderings and landscaping visuals, materials, and facades are for indicative purposes only and subject to change. Actual areas may vary from the stated figures. All dimensions are measured to structural elements. HYDE PARK reserves the right to make non-fundamental changes to the design provided herein without prior notice.

# Apartment 5

## Ground Floor

**Total Area** 111 m<sup>2</sup>

Dining And Living	4.50 x 5.15 m
Guest Toilet	1.70 x 1.20 m
Kitchen	2.90 x 3.00 m
Master Bedroom	3.75 x 3.60 m
Master Bathroom	2.05 x 1.95m
Bedroom 1	3.75 x 3.60 m
Bathroom	2.05 x 1.65 m
Terrace	7.40 x 2.50 m



Ground Floor

**Disclaimer**

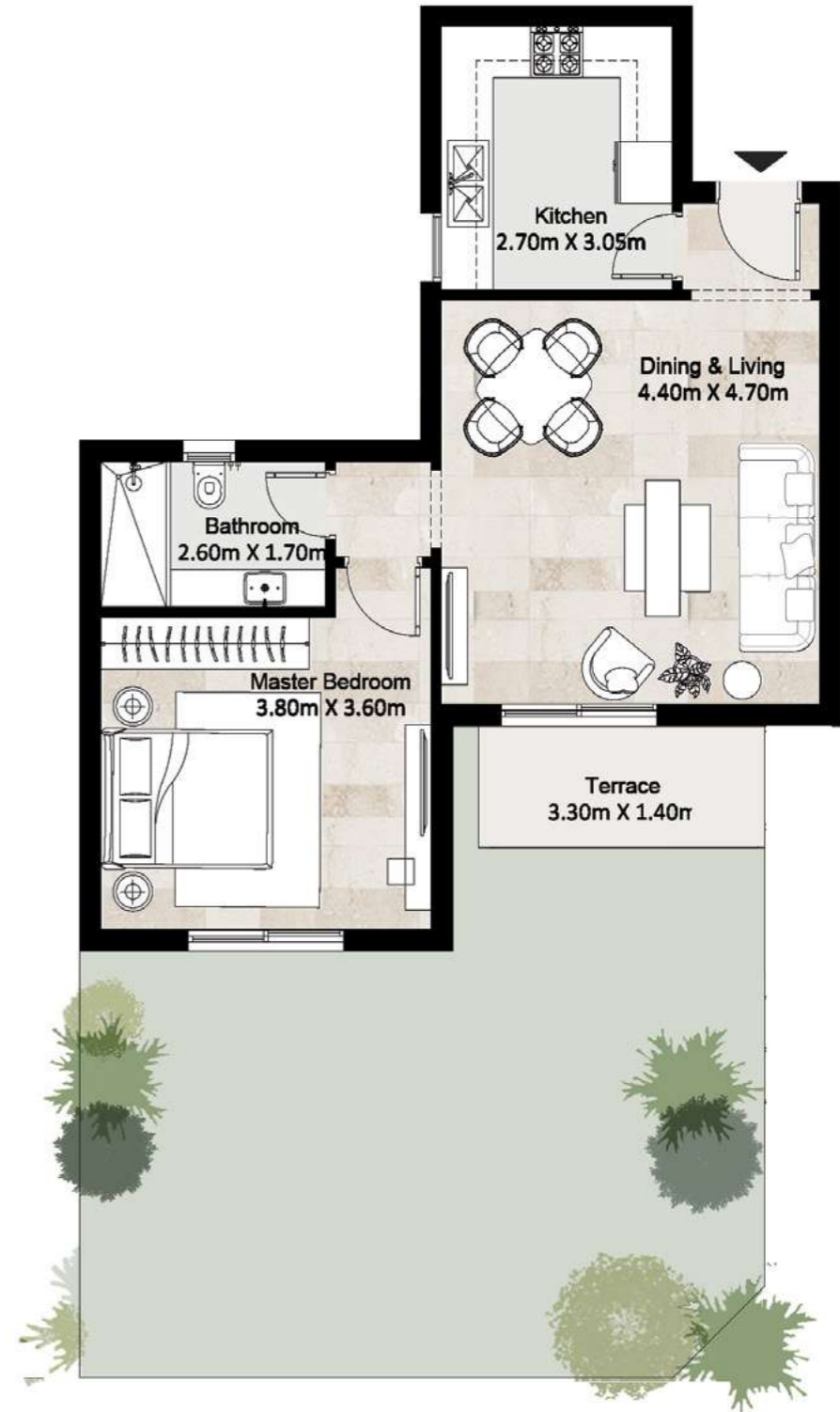
Diagrams are not to scale and are for illustrative purposes only. All renderings and landscaping visuals, materials, and facades are for indicative purposes only and subject to change. Actual areas may vary from the stated figures. All dimensions are measured to structural elements. HYDE PARK reserves the right to make non-fundamental changes to the design provided herein without prior notice.

# Apartment 6

## Ground Floor

**Total Area** 75 m<sup>2</sup>

Reception	4.40 x 4.70 m
Kitchen	3.05 x 2.70 m
Master Bedroom	3.80 x 3.60 m
Bathroom	2.60 x 1.70 m
Terrace	3.30 x 1.40 m



Ground Floor

**Disclaimer**

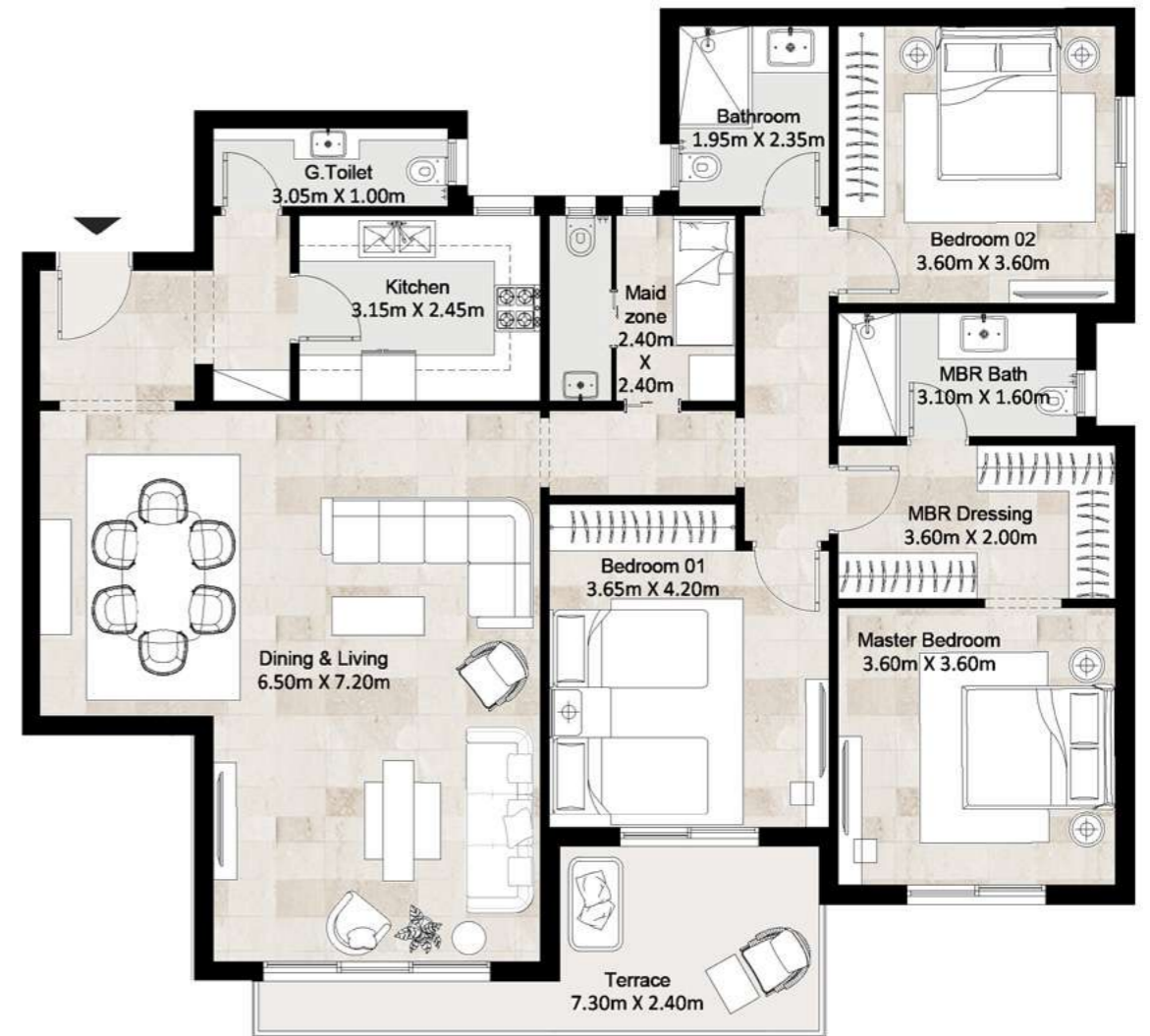
Diagrams are not to scale and are for illustrative purposes only. All renderings and landscaping visuals, materials, and facades are for indicative purposes only and subject to change. Actual areas may vary from the stated figures. All dimensions are measured to structural elements. HYDE PARK reserves the right to make non-fundamental changes to the design provided herein without prior notice.

# Apartment 1

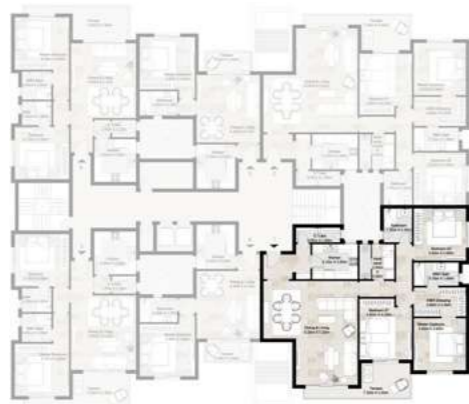
## Typical Floor

**Total Area** 179 m<sup>2</sup>

Dining And Living	6.50 x 7.20 m
Guest Toilet	3.05 x 1.00 m
Kitchen	3.15 x 2.45 m
Maid Zone	2.40 x 2.40 m
Master Bedroom	3.60 x 3.60 m
Master Bathroom	3.10 x 1.60 m
Dressing	3.60 x 2.00 m
Bedroom 1	3.65 x 4.20 m
Bathroom	1.95 x 2.35 m
Bedroom 2	3.60 x 3.60 m
Terrace	7.30 x 2.40 m



Typical Floor



**Disclaimer**

Diagrams are not to scale and are for illustrative purposes only. All renderings and landscaping visuals, materials, and facades are for indicative purposes only and subject to change. Actual areas may vary from the stated figures. All dimensions are measured to structural elements. HYDE PARK reserves the right to make non-fundamental changes to the design provided herein without prior notice.

# Apartment 2

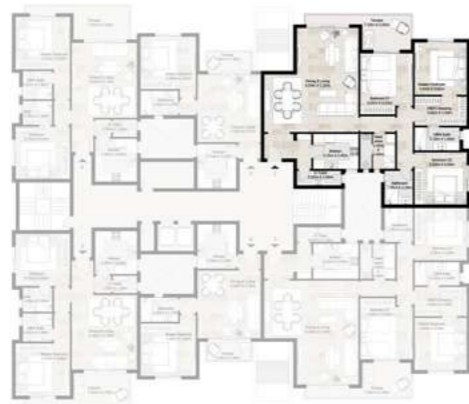
## Typical Floor

**Total Area** 179 m<sup>2</sup>

Dining And Living	6.50 x 7.20 m
Guest Toilet	3.05 x 1.00 m
Kitchen	3.15 x 2.45 m
Maid Zone	2.40 x 2.40 m
Master Bedroom	3.60 x 3.60 m
Master Bathroom	3.10 x 1.60 m
Dressing	3.60 x 2.00 m
Bedroom 1	3.65 x 4.20 m
Bathroom	1.95 x 2.35 m
Bedroom 2	3.60 x 3.60 m
Terrace	7.20 x 2.40 m



Typical Floor



**Disclaimer**

Diagrams are not to scale and are for illustrative purposes only. All renderings and landscaping visuals, materials, and facades are for indicative purposes only and subject to change. Actual areas may vary from the stated figures. All dimensions are measured to structural elements. HYDE PARK reserves the right to make non-fundamental changes to the design provided herein without prior notice.

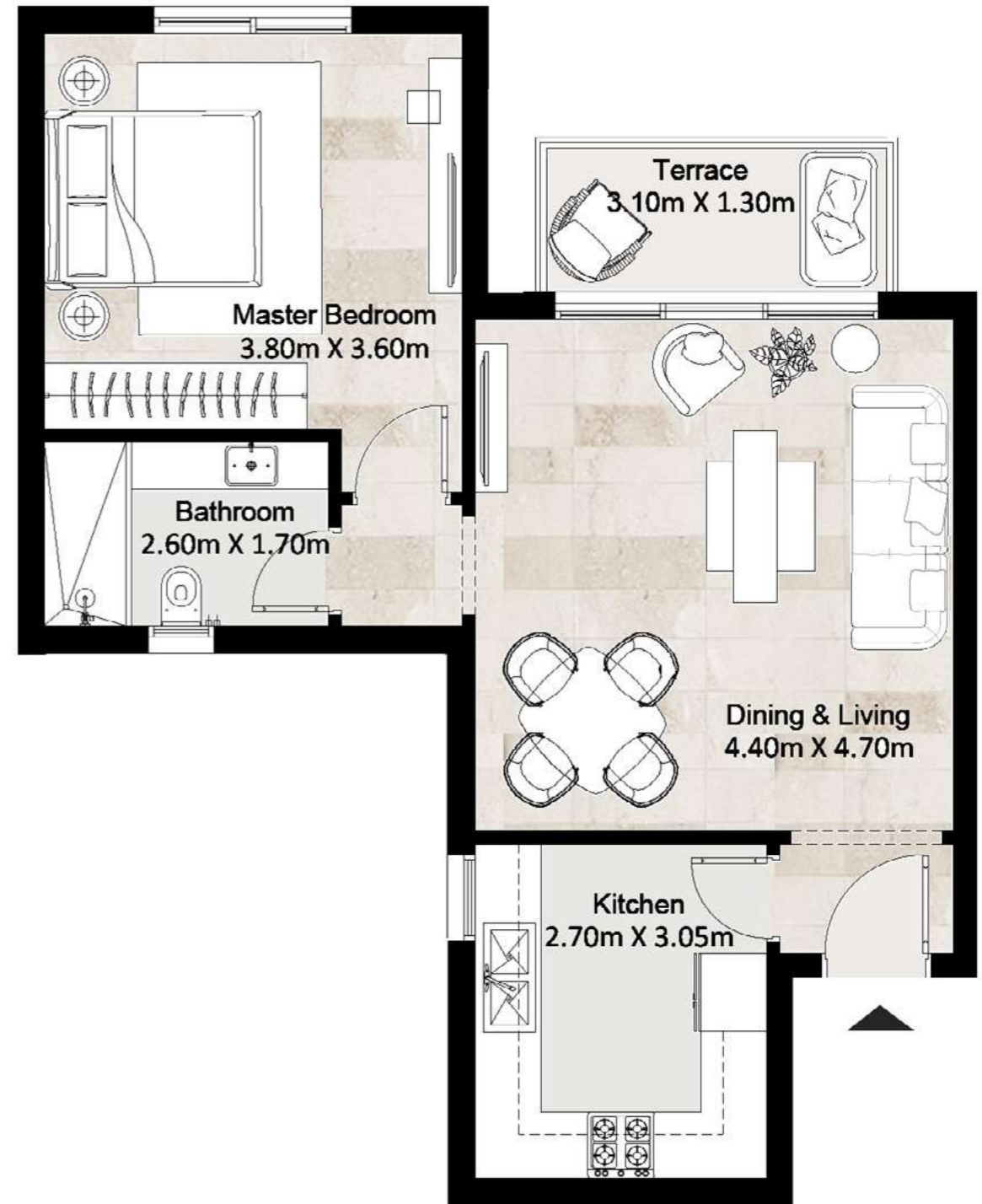


# Apartment 3

## Typical Floor

**Total Area** 75 m<sup>2</sup>

Dining And Living	4.40 x 4.70 m
Kitchen	2.70 x 3.05 m
Master Bedroom	3.80 x 3.60 m
Bathroom	2.60 x 1.70 m
Terrace	3.10 x 1.30 m



Typical Floor

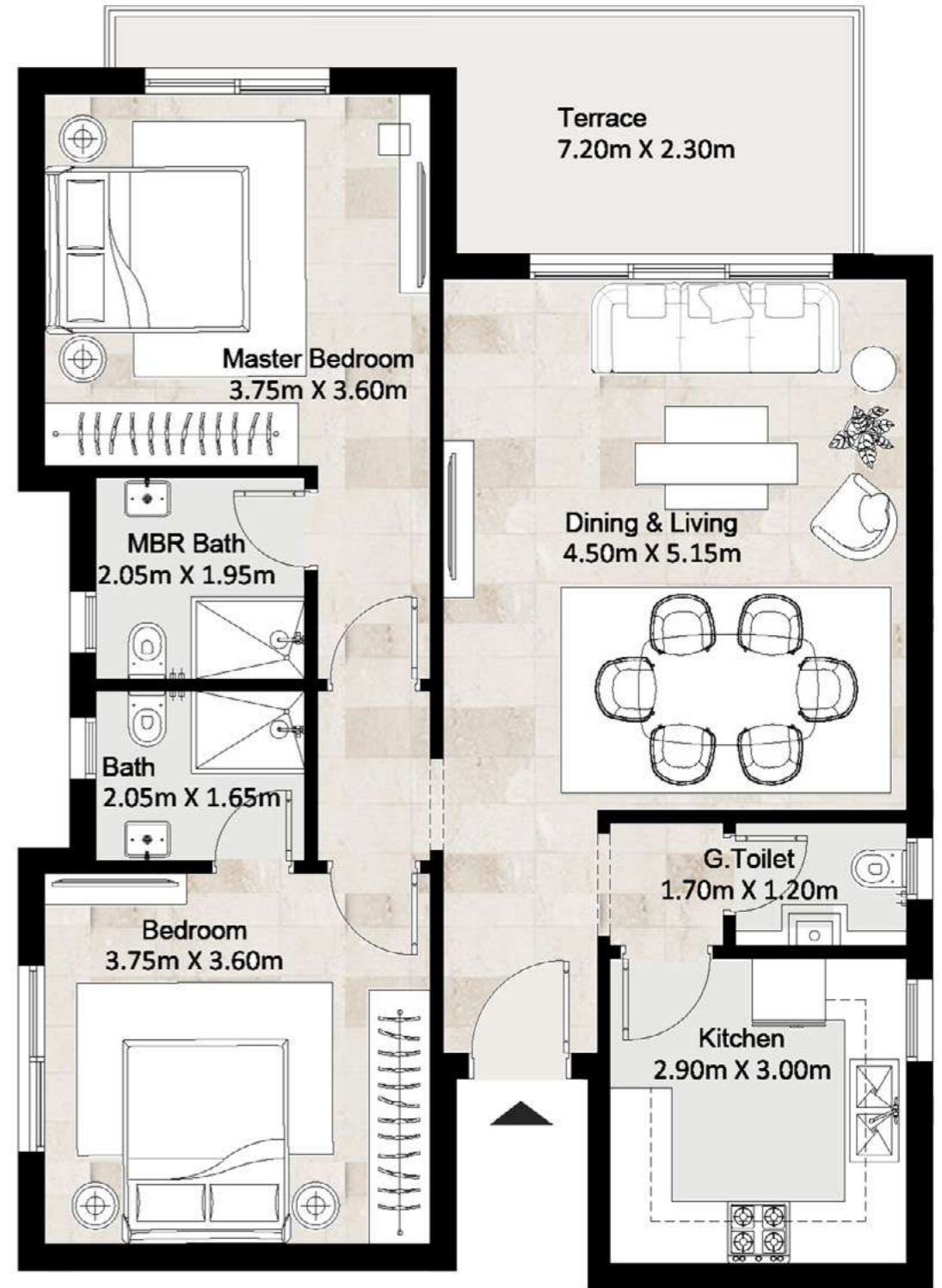
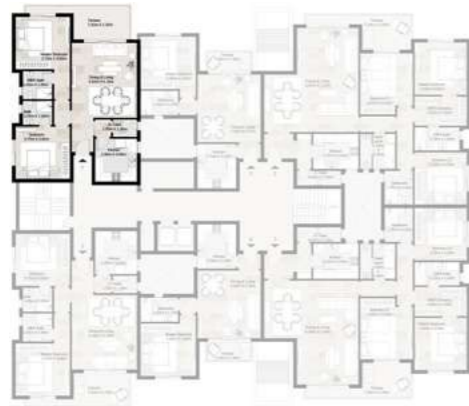
**Disclaimer**

Diagrams are not to scale and are for illustrative purposes only. All renderings and landscaping visuals, materials, and facades are for indicative purposes only and subject to change. Actual areas may vary from the stated figures. All dimensions are measured to structural elements. HYDE PARK reserves the right to make non-fundamental changes to the design provided herein without prior notice.

# Apartment 4

## Typical Floor

<b>Total Area</b>	113 m <sup>2</sup>
Dining And Living	4.50 x 5.15 m
Guest Toilet	1.70 x 1.20 m
Kitchen	2.90 x 3.00 m
Master Bedroom	3.75 x 3.60 m
Master Bathroom	2.05 x 1.95m
Bedroom	3.75 x 3.60 m
Bathroom	2.05 x 1.65 m
Terrace	7.20 x 2.30 m



Typical Floor

**Disclaimer**

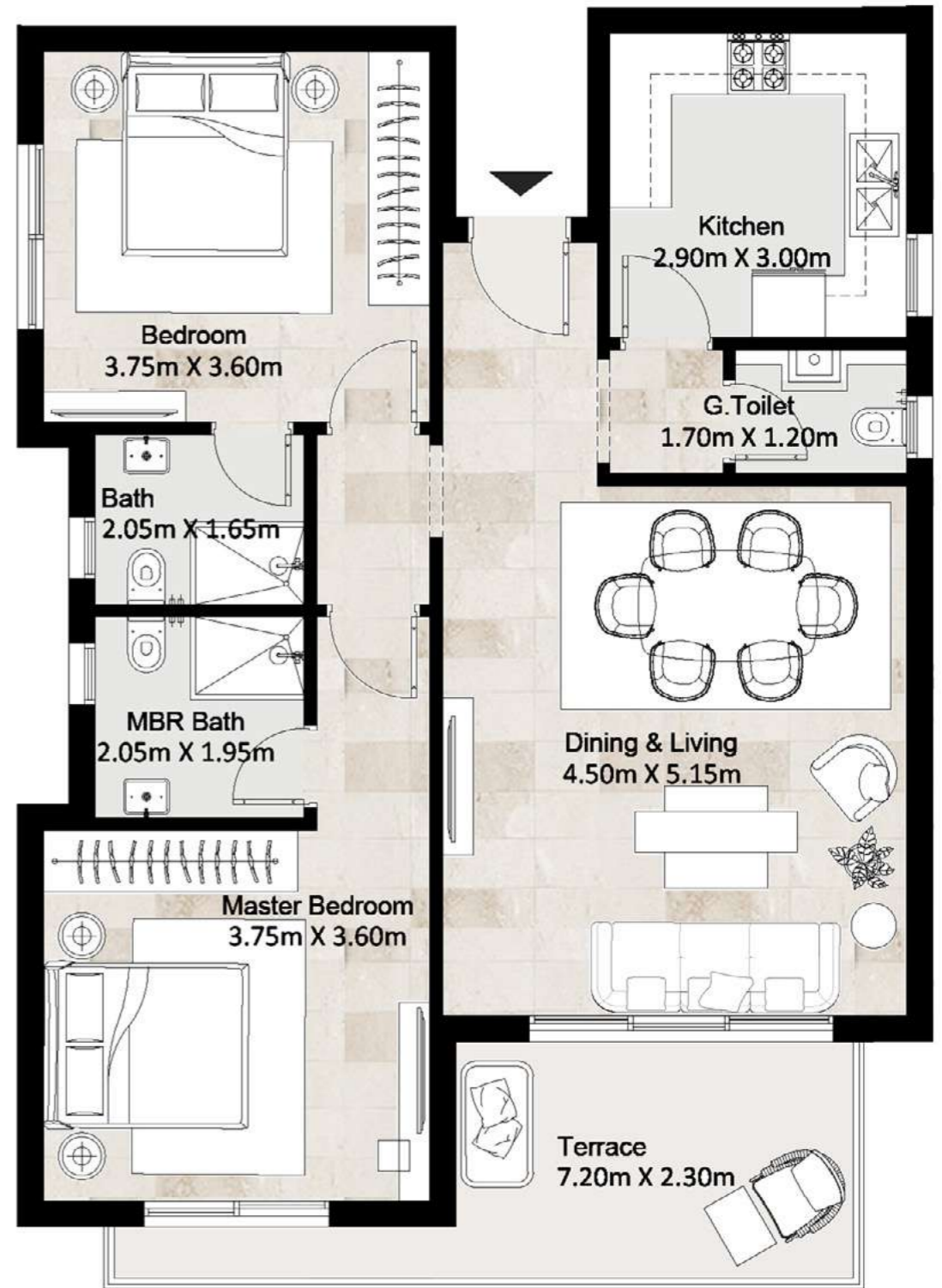
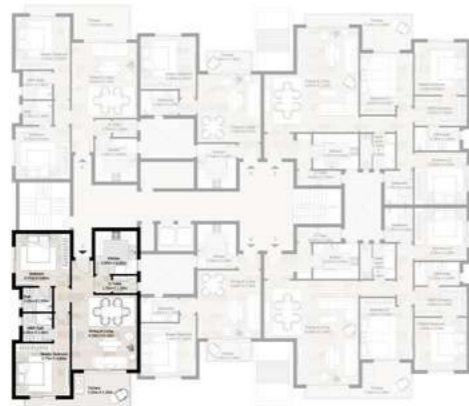
Diagrams are not to scale and are for illustrative purposes only. All renderings and landscaping visuals, materials, and facades are for indicative purposes only and subject to change. Actual areas may vary from the stated figures. All dimensions are measured to structural elements. HYDE PARK reserves the right to make non-fundamental changes to the design provided herein without prior notice.

# Apartment 5

## Typical Floor

**Total Area** 113 m<sup>2</sup>

Dining And Living	4.50 x 5.15 m
Guest Toilet	1.70 x 1.20 m
Kitchen	2.90 x 3.00 m
Master Bedroom	3.75 x 3.60 m
Master Bathroom	2.05 x 1.95m
Bedroom	3.75 x 3.60 m
Bathroom	2.05 x 1.65 m
Terrace	7.20 x 2.30 m



Typical Floor

**Disclaimer**

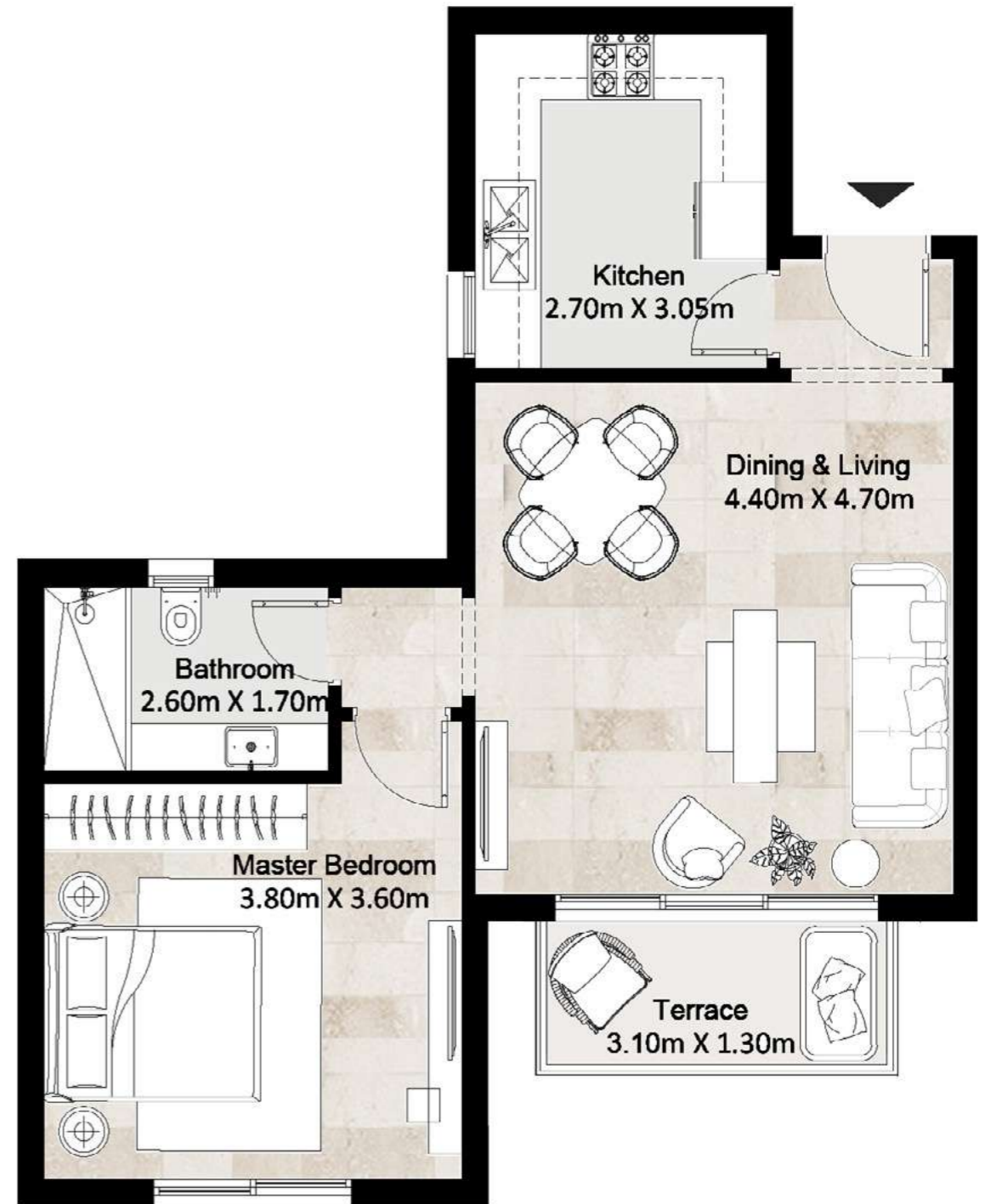
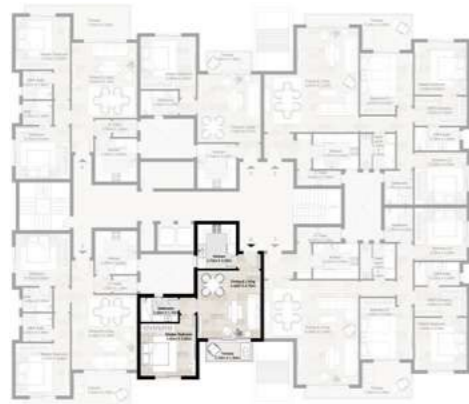
Diagrams are not to scale and are for illustrative purposes only. All renderings and landscaping visuals, materials, and facades are for indicative purposes only and subject to change. Actual areas may vary from the stated figures. All dimensions are measured to structural elements. HYDE PARK reserves the right to make non-fundamental changes to the design provided herein without prior notice.

# Apartment 6

## Typical Floor

**Total Area** 75 m<sup>2</sup>

Dining And Living	4.40 x 4.70 m
Kitchen	2.70 x 3.05 m
Master Bedroom	3.80 x 3.60 m
Bathroom	2.60 x 1.70 m
Terrace	3.10 x 1.30 m



Typical Floor

**Disclaimer**

Diagrams are not to scale and are for illustrative purposes only. All renderings and landscaping visuals, materials, and facades are for indicative purposes only and subject to change. Actual areas may vary from the stated figures. All dimensions are measured to structural elements. HYDE PARK reserves the right to make non-fundamental changes to the design provided herein without prior notice.

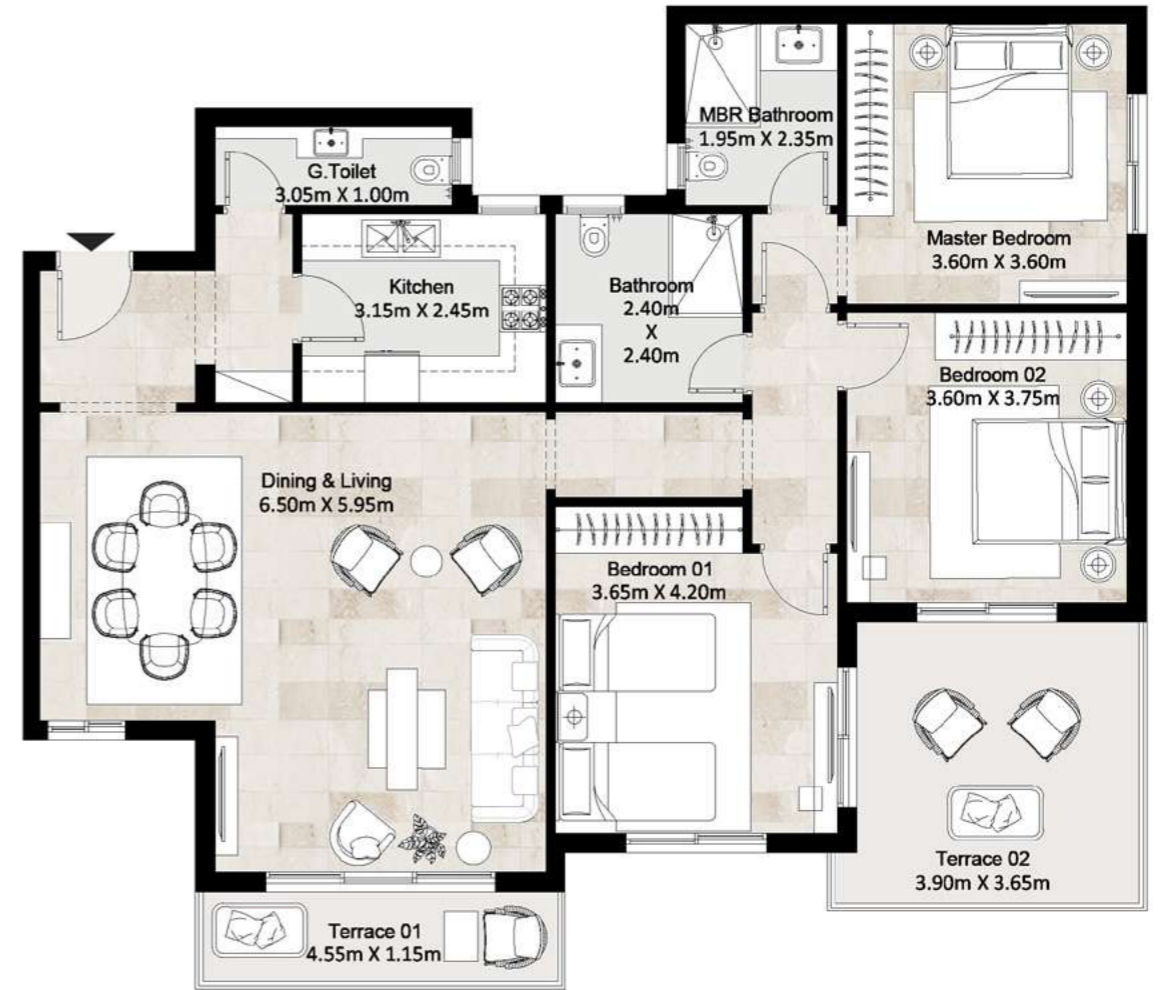
# Apartment 1

## Fifth Floor

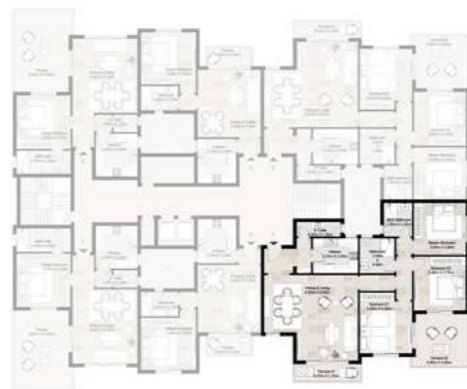
**Total Area** 152 m<sup>2</sup>

**Roof Terrace Area** 14 m<sup>2</sup>

Dining And Living	6.50 x 5.95 m
Guest Toilet	3.05 x 1.00 m
Kitchen	3.15 x 2.45 m
Master Bedroom	3.60 x 3.60 m
Master Bathroom	1.95 x 2.35 m
Bedroom 1	3.65 x 4.20 m
Bathroom	2.40 x 2.40 m
Bedroom 2	3.60 x 3.75 m
Terrace 1	4.55 x 1.15 m
Terrace 2	3.90 x 3.65 m



Fifth Floor



**Disclaimer**

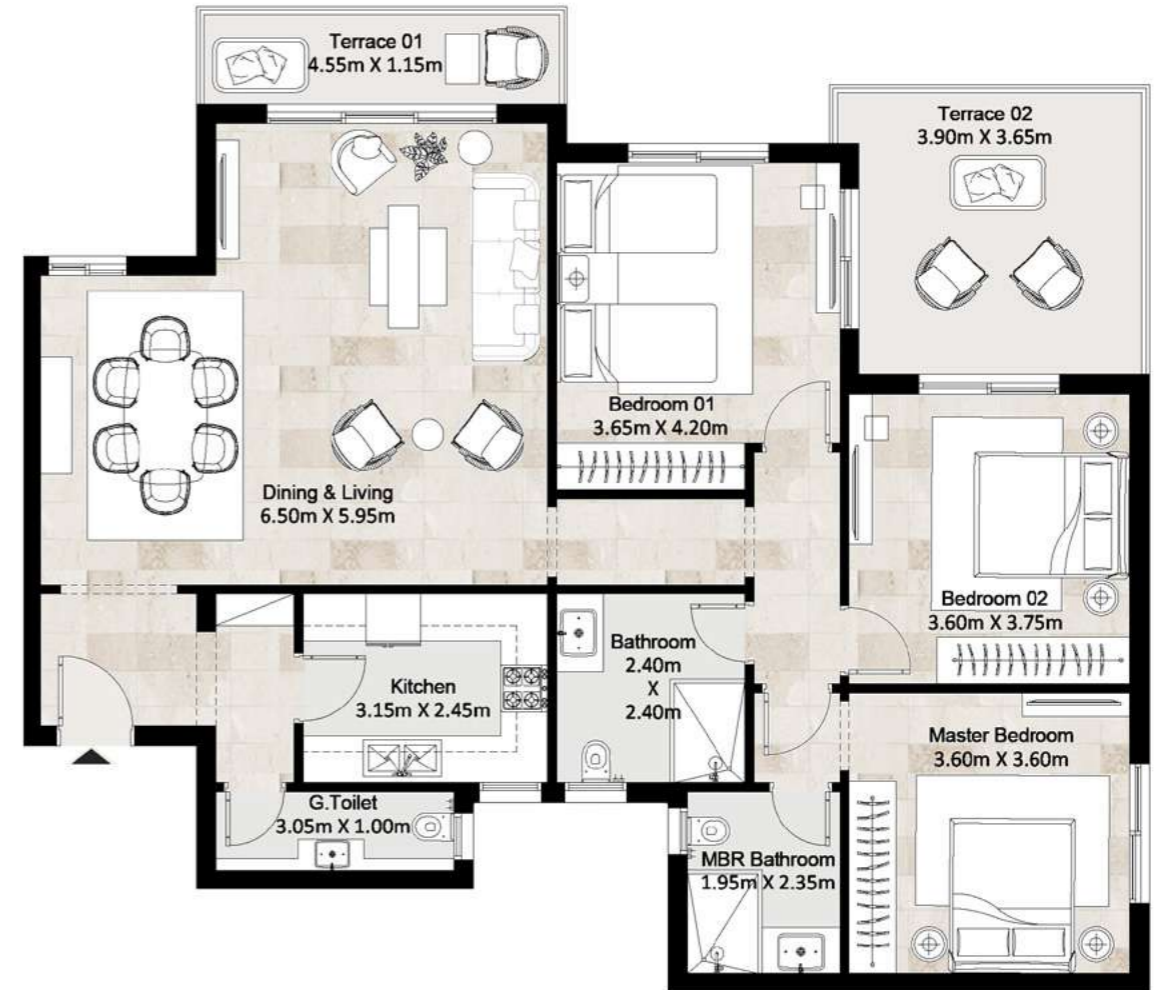
Diagrams are not to scale and are for illustrative purposes only. All renderings and landscaping visuals, materials, and facades are for indicative purposes only and subject to change. Actual areas may vary from the stated figures. All dimensions are measured to structural elements. HYDE PARK reserves the right to make non-fundamental changes to the design provided herein without prior notice.

# Apartment 2

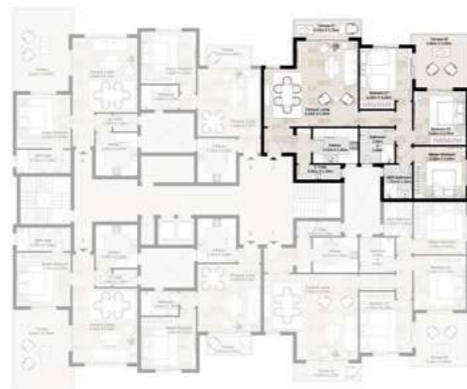
## Fifth Floor

**Total Area** 152 m<sup>2</sup>  
**Roof Terrace Area** 14 m<sup>2</sup>

Dining And Living	6.50 x 5.95 m
Guest Toilet	3.05 x 1.00 m
Kitchen	3.15 x 2.45 m
Master Bedroom	3.60 x 3.60 m
Master Bathroom	1.95 x 2.35 m
Bedroom 1	3.65 x 4.20 m
Bathroom	2.40 x 2.40 m
Bedroom 2	3.60 x 3.75 m
Terrace 1	4.55 x 1.15 m
Terrace 2	3.90 x 3.65 m



Fifth Floor



**Disclaimer**

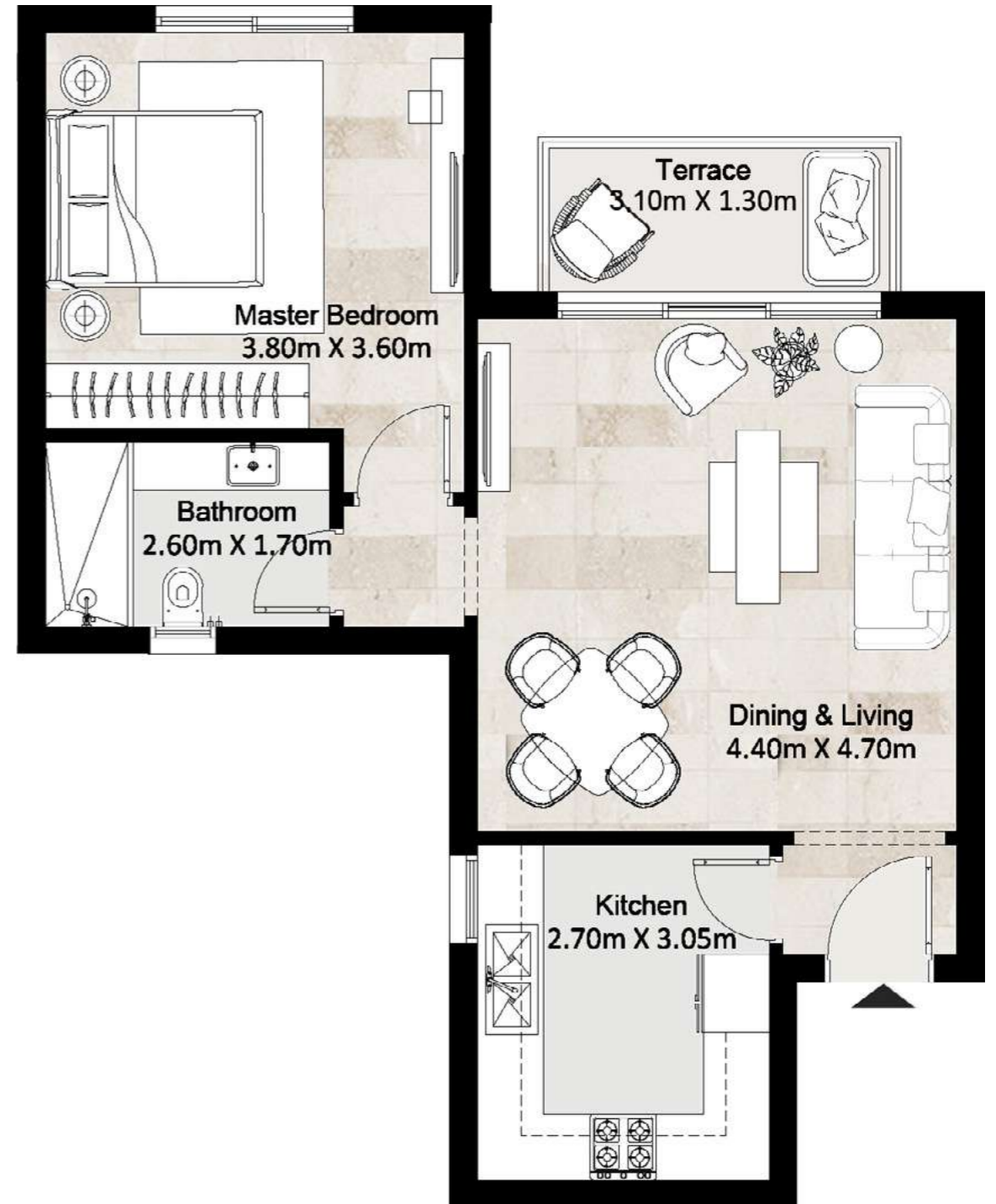
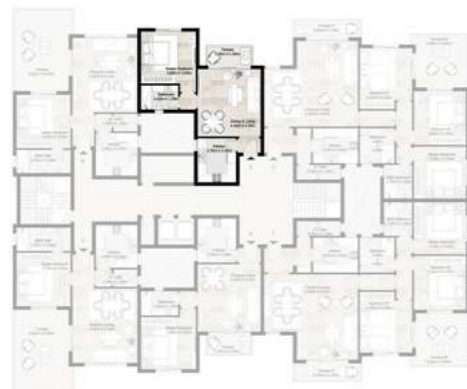
Diagrams are not to scale and are for illustrative purposes only. All renderings and landscaping visuals, materials, and facades are for indicative purposes only and subject to change. Actual areas may vary from the stated figures. All dimensions are measured to structural elements. HYDE PARK reserves the right to make non-fundamental changes to the design provided herein without prior notice.

# Apartment 3

## Fifth Floor

**Total Area** 75 m<sup>2</sup>

Dining And Living	4.40 x 4.70 m
Kitchen	2.70 x 3.05 m
Master Bedroom	3.80 x 3.60 m
Bathroom	2.60 x 1.70 m
Terrace	3.10 x 1.30 m



Fifth Floor

**Disclaimer**

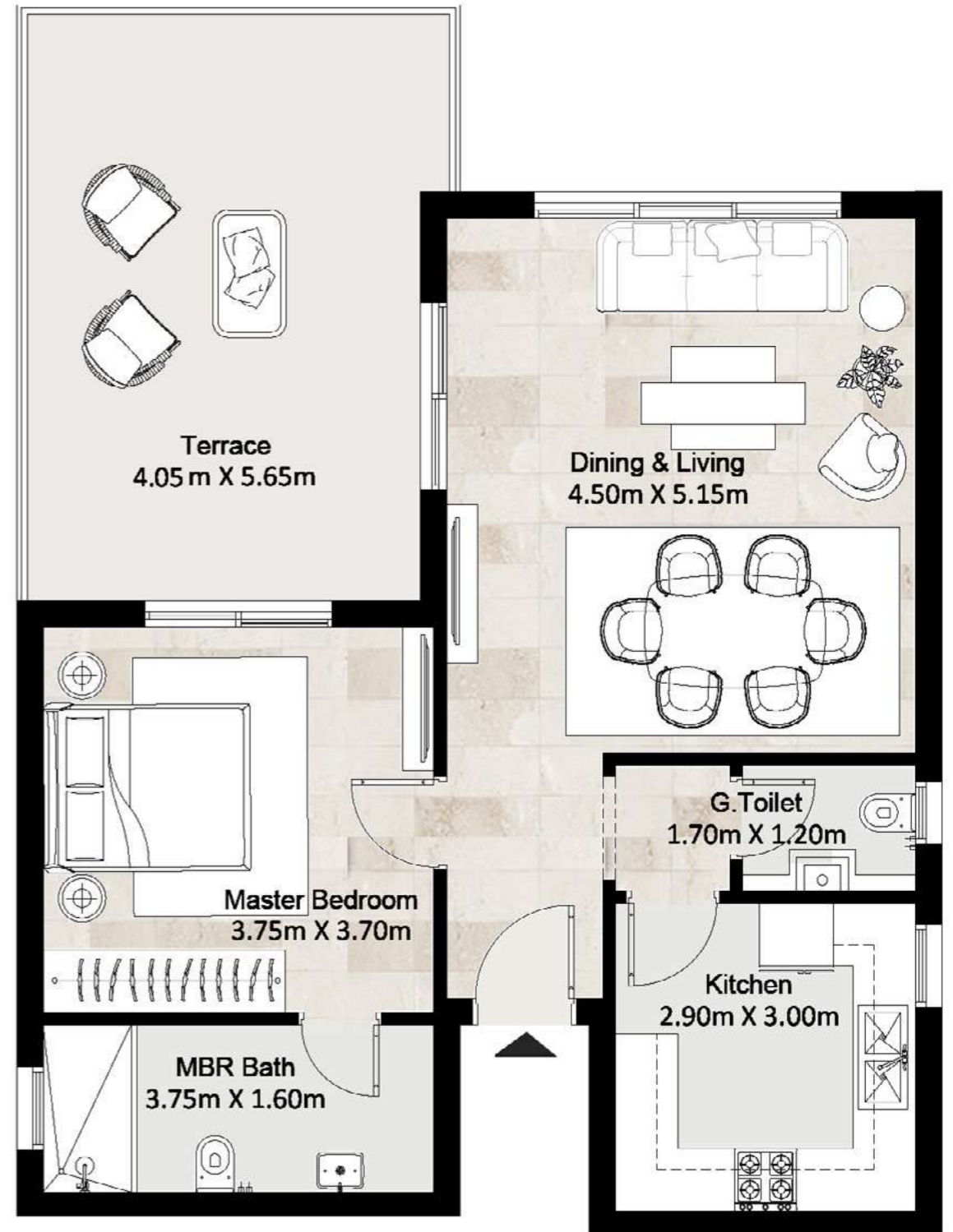
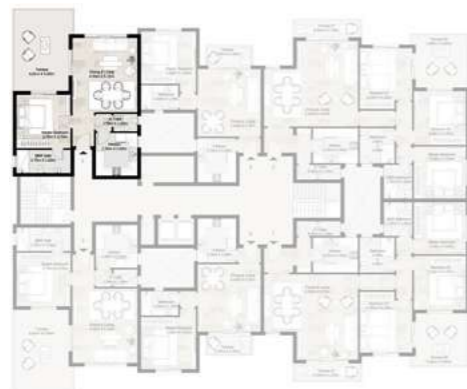
Diagrams are not to scale and are for illustrative purposes only. All renderings and landscaping visuals, materials, and facades are for indicative purposes only and subject to change. Actual areas may vary from the stated figures. All dimensions are measured to structural elements. HYDE PARK reserves the right to make non-fundamental changes to the design provided herein without prior notice.

# Apartment 4

## Fifth Floor

**Total Area** 81 m<sup>2</sup>  
**Roof Terrace Area** 23 m<sup>2</sup>

Dining And Living	4.50 x 5.15 m
Guest Toilet	1.70 x 1.20 m
Kitchen	2.90 x 3.00 m
Master Bedroom	3.75 x 3.70 m
Master Bathroom	3.75 x 1.60 m
Terrace	4.05 x 5.65 m



Fifth Floor

**Disclaimer**

Diagrams are not to scale and are for illustrative purposes only. All renderings and landscaping visuals, materials, and facades are for indicative purposes only and subject to change. Actual areas may vary from the stated figures. All dimensions are measured to structural elements. HYDE PARK reserves the right to make non-fundamental changes to the design provided herein without prior notice.

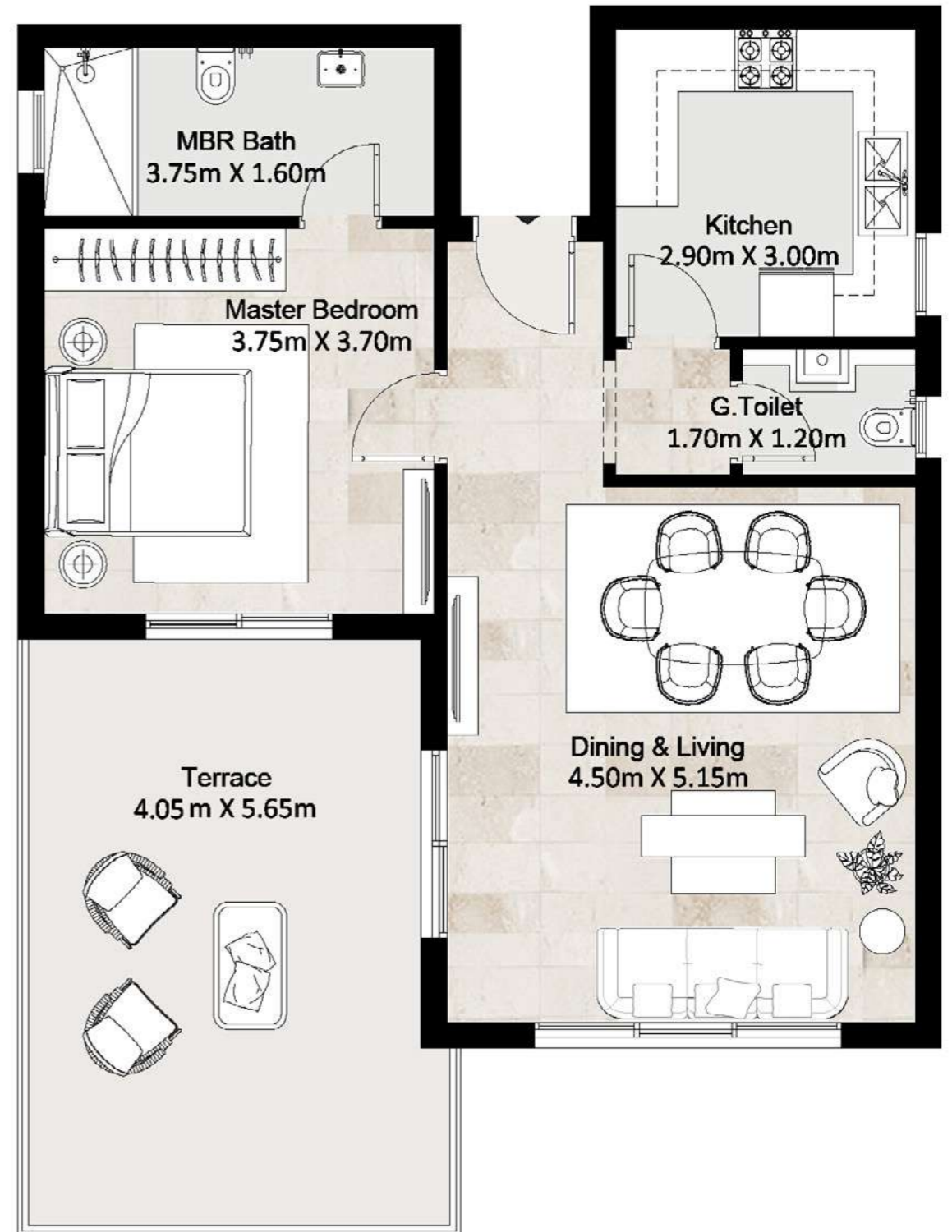
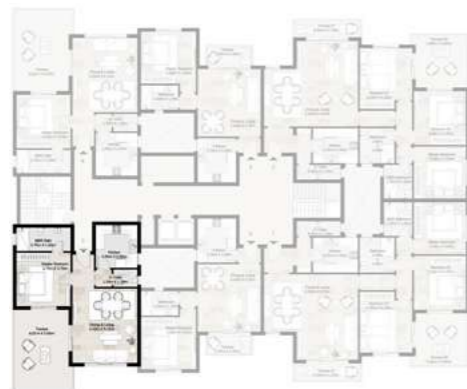


# Apartment 5

## Fifth Floor

**Total Area** 81 m<sup>2</sup>  
**Roof Terrace Area** 23 m<sup>2</sup>

Dining And Living	4.50 x 5.15 m
Guest Toilet	1.70 x 1.20 m
Kitchen	2.90 x 3.00 m
Master Bedroom	3.75 x 3.70 m
Master Bathroom	3.75 x 1.60 m
Terrace	4.05 x 5.65 m



Fifth Floor

**Disclaimer**

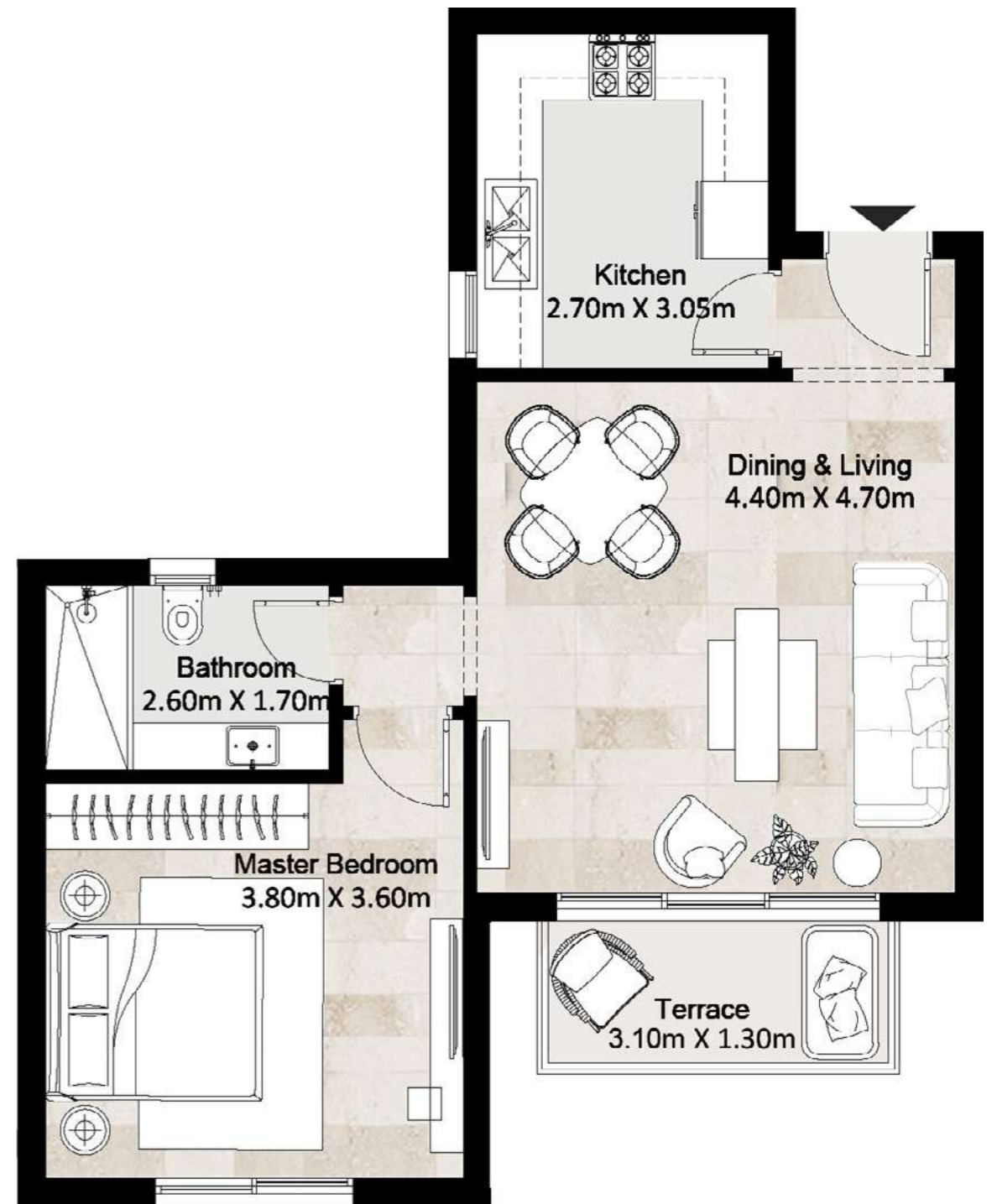
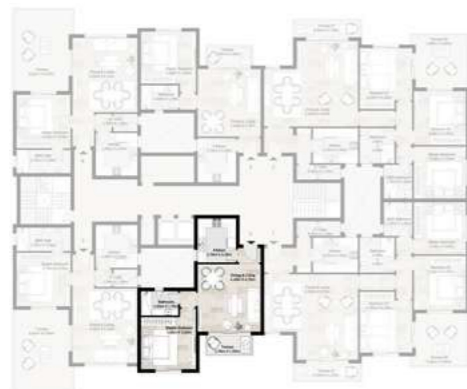
Diagrams are not to scale and are for illustrative purposes only. All renderings and landscaping visuals, materials, and facades are for indicative purposes only and subject to change. Actual areas may vary from the stated figures. All dimensions are measured to structural elements. HYDE PARK reserves the right to make non-fundamental changes to the design provided herein without prior notice.

# Apartment 6

## Fifth Floor

**Total Area** 75 m<sup>2</sup>

Dining And Living	4.40 x 4.70 m
Kitchen	2.70 x 3.05 m
Master Bedroom	3.80 x 3.60 m
Bathroom	2.60 x 1.70 m
Terrace	3.10 x 1.30 m



Fifth Floor

**Disclaimer**

Diagrams are not to scale and are for illustrative purposes only. All renderings and landscaping visuals, materials, and facades are for indicative purposes only and subject to change. Actual areas may vary from the stated figures. All dimensions are measured to structural elements. HYDE PARK reserves the right to make non-fundamental changes to the design provided herein without prior notice.

— 16696 —

[www.hydeparkdevelopments.com](http://www.hydeparkdevelopments.com)