

PLACES BY



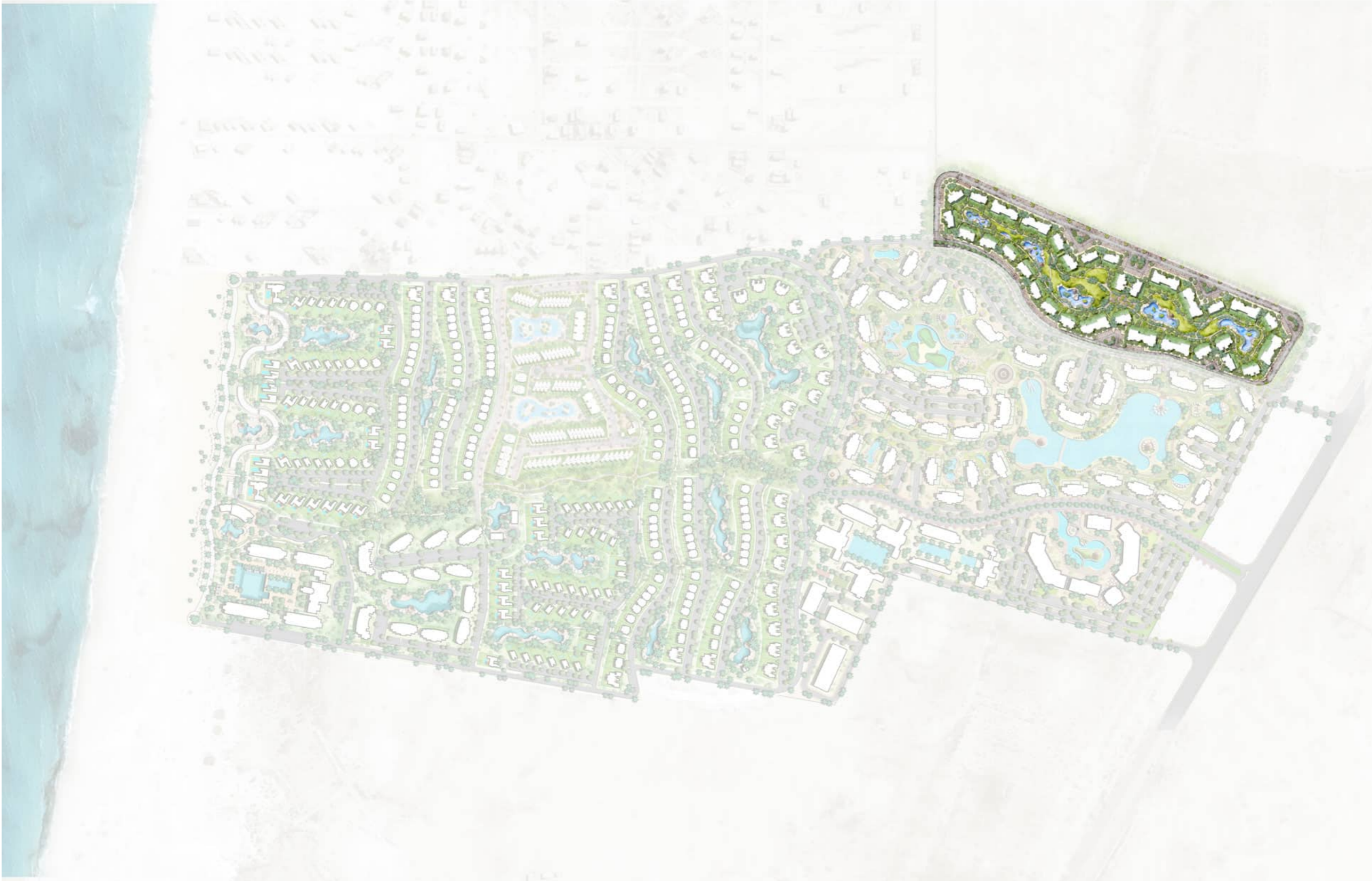
# Seashore

## *Village*

CHALETs &  
PENTHOUSES

BUILDING D

# Master plan





# Zone plan





# Zone plan











# Chalet 1

## 4<sup>th</sup> Floor

**Built-Up Area** 65 m<sup>2</sup>

Reception Area	4.90 x 3.60 m
Kitchen	1.60 x 2.35 m
Bedroom	3.60 x 3.60 m
Bathroom	1.60 x 2.40 m



4<sup>th</sup> Floor



**Disclaimer**

Diagrams are not to scale and are for illustrative purposes only. All renderings and landscaping visuals, materials, and facades are for indicative purposes only and subject to change. Actual areas may vary from the stated figures. All dimensions are measured to structural elements. HYDE PARK reserves the right to make non-fundamental changes to the design provided herein without prior notice.

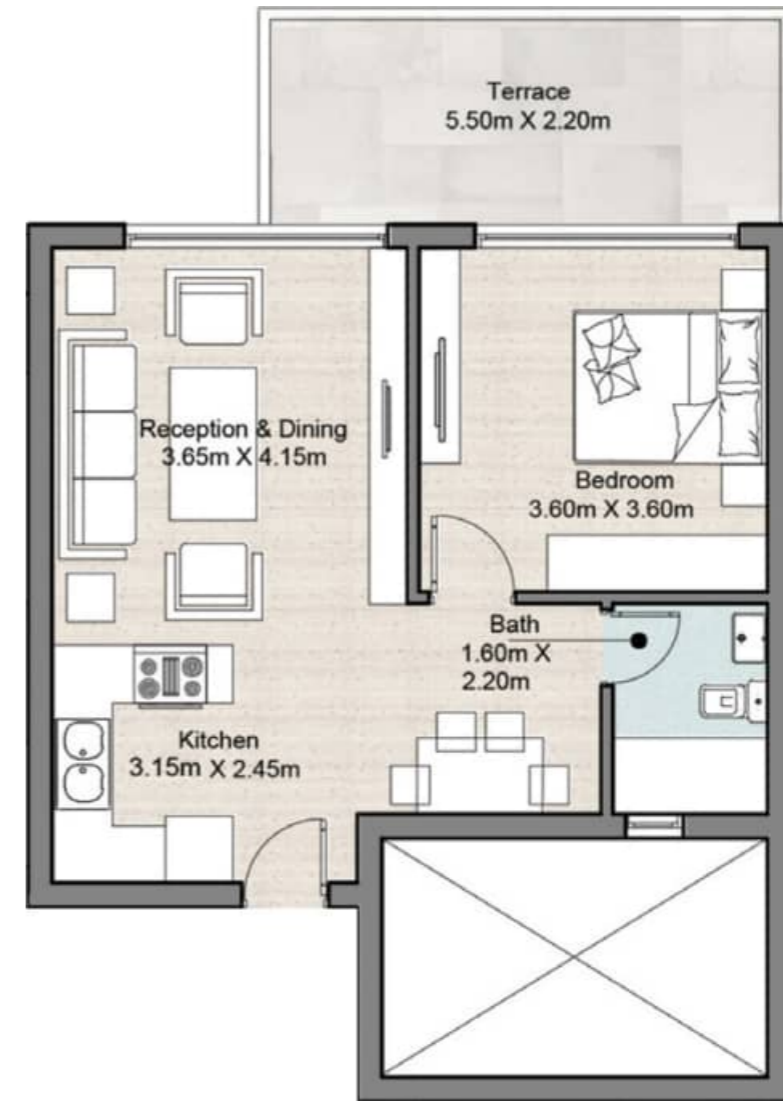


# Chalet 2

## 4<sup>th</sup> Floor

**Built-Up Area** 75 m<sup>2</sup>

Reception Area	3.65 x 4.15 m
Kitchen	3.15 x 2.45 m
Bedroom	3.60 x 3.60 m
Bathroom	1.60 x 2.20 m
Terrace	5.50 x 2.20 m



4<sup>th</sup> Floor



**Disclaimer**

Diagrams are not to scale and are for illustrative purposes only. All renderings and landscaping visuals, materials, and facades are for indicative purposes only and subject to change. Actual areas may vary from the stated figures. All dimensions are measured to structural elements. HYDE PARK reserves the right to make non-fundamental changes to the design provided herein without prior notice.



# Chalet 3 & 4

## 4<sup>th</sup> Floor

**Built-Up Area** 96 m<sup>2</sup>

Reception Area	4.20 x 3.80 m
Kitchen	2.20 x 3.80 m
M.bedroom	3.60 x 3.60 m
M.bathroom	1.90 x 2.20 m
Bathroom	1.60 x 2.20 m
Bedroom	3.80 x 3.60 m
Terrace	3.60 x 1.60 m



4<sup>th</sup> Floor



**Disclaimer**

Diagrams are not to scale and are for illustrative purposes only. All renderings and landscaping visuals, materials, and facades are for indicative purposes only and subject to change. Actual areas may vary from the stated figures. All dimensions are measured to structural elements. HYDE PARK reserves the right to make non-fundamental changes to the design provided herein without prior notice.

# Chalet 5

## 4<sup>th</sup> Floor

**Built-Up Area** 63 m<sup>2</sup>

Reception Area	3.80 x 4.00 m
Kitchen	3.80 x 2.40 m
M.bedroom	3.60 x 3.70 m
M.bathroom	1.70 x 2.20 m
Bathroom	1.45 x 2.00 m



4<sup>th</sup> Floor



**Disclaimer**

Diagrams are not to scale and are for illustrative purposes only. All renderings and landscaping visuals, materials, and facades are for indicative purposes only and subject to change. Actual areas may vary from the stated figures. All dimensions are measured to structural elements. HYDE PARK reserves the right to make non-fundamental changes to the design provided herein without prior notice.



# Chalet 6

## 4<sup>th</sup> Floor

**Built-Up Area** 89 m<sup>2</sup>

Reception Area	5.20 x 3.60 m
Kitchen	3.10 x 2.45m
Bedroom	3.60 x 3.60 m
M.bathroom	2.20 x 1.85 m
M.bedroom	3.60 x 3.60 m
Bathroom	2.40 x 1.60m



4<sup>th</sup> Floor



**Disclaimer**

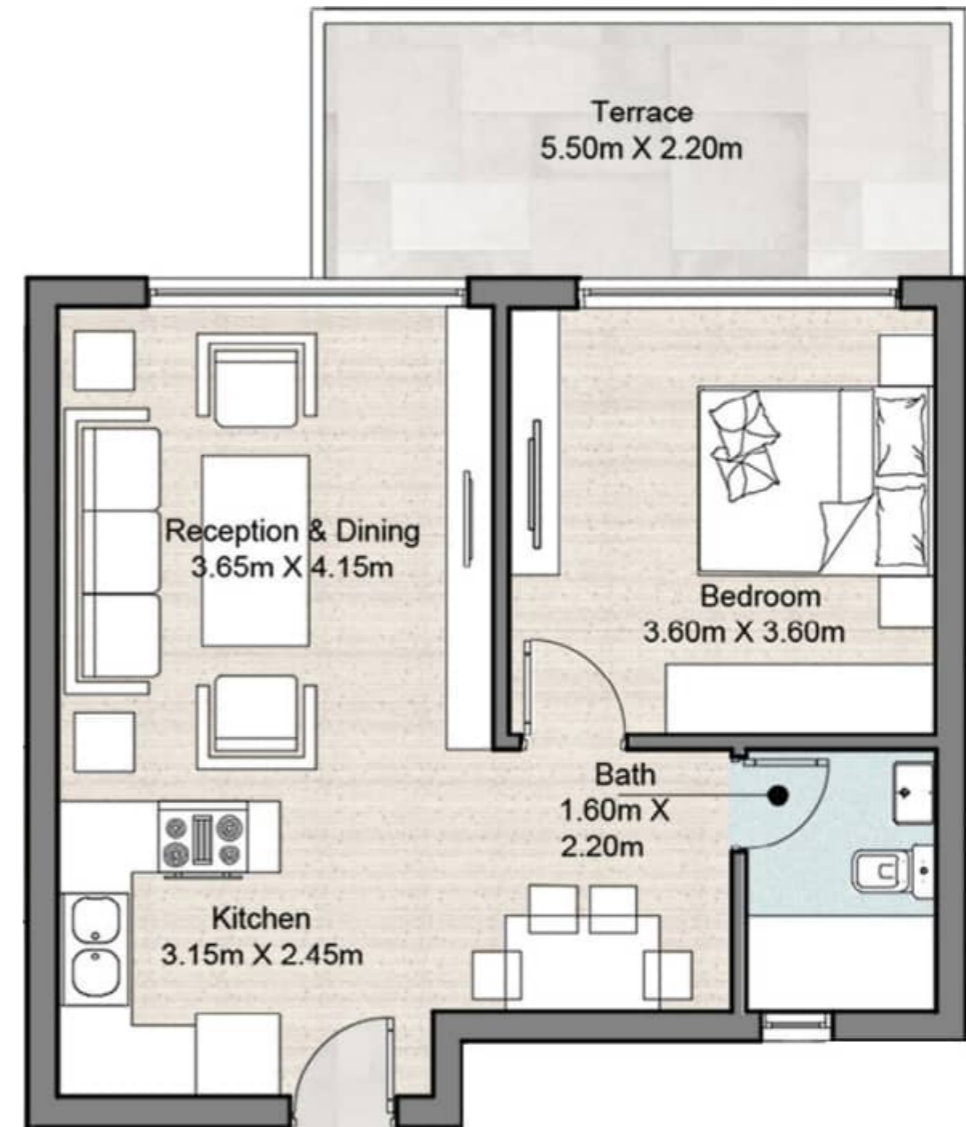
Diagrams are not to scale and are for illustrative purposes only. All renderings and landscaping visuals, materials, and facades are for indicative purposes only and subject to change. Actual areas may vary from the stated figures. All dimensions are measured to structural elements. HYDE PARK reserves the right to make non-fundamental changes to the design provided herein without prior notice.

# Penthouse 1

## 5<sup>th</sup> Floor

**Built-Up Area** 75 m<sup>2</sup>

Reception Area	3.65 x 4.15 m
Kitchen	3.15 x 2.45 m
Bedroom	3.60 x 3.60 m
Bathroom	1.60 x 2.20 m
Terrace	5.50 x 2.20 m



5<sup>th</sup> Floor



**Disclaimer**

Diagrams are not to scale and are for illustrative purposes only. All renderings and landscaping visuals, materials, and facades are for indicative purposes only and subject to change. Actual areas may vary from the stated figures. All dimensions are measured to structural elements. HYDE PARK reserves the right to make non-fundamental changes to the design provided herein without prior notice.

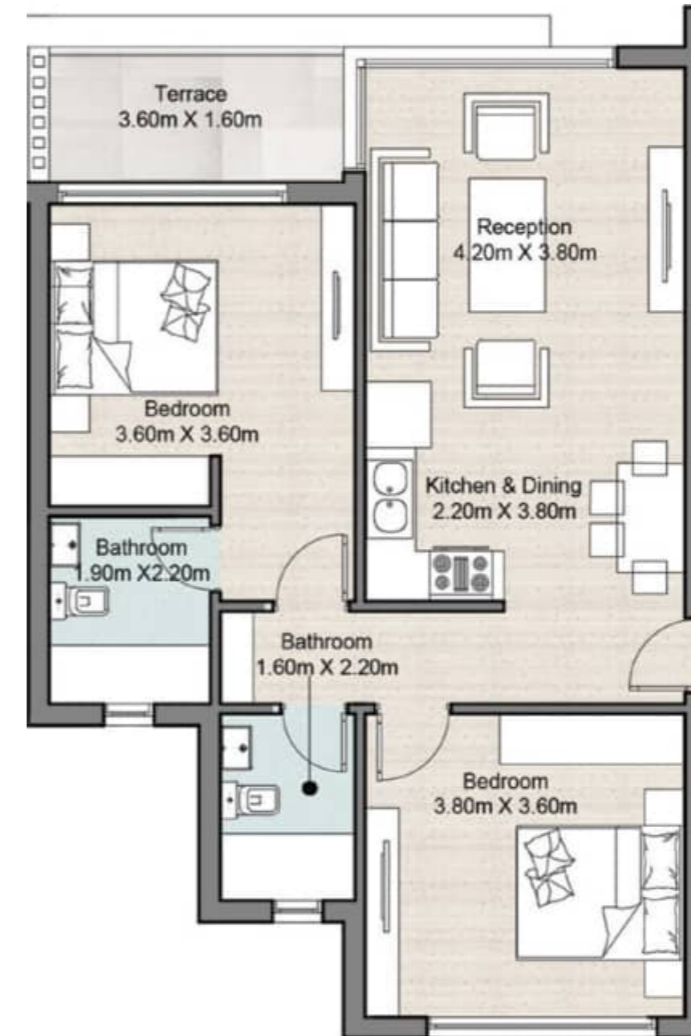


# Penthouse 2 & 3

## 5<sup>th</sup> Floor

**Built-Up Area** 96 m<sup>2</sup>

Reception Area	4.20 x 3.80 m
Kitchen	2.20 x 3.80 m
M.bedroom	3.60 x 3.60 m
M.bathroom	1.90 x 2.20 m
Bathroom	1.60 x 2.20 m
Bedroom 2	3.80 x 3.60 m
Terraace	3.60 x 1.60 m



5<sup>th</sup> Floor



**Disclaimer**

Diagrams are not to scale and are for illustrative purposes only. All renderings and landscaping visuals, materials, and facades are for indicative purposes only and subject to change. Actual areas may vary from the stated figures. All dimensions are measured to structural elements. HYDE PARK reserves the right to make non-fundamental changes to the design provided herein without prior notice.

# Penthouse 4

## 5<sup>th</sup> Floor

**Built-Up Area** 70 m<sup>2</sup>

Reception Area	3.80 x 4.10 m
Kitchen & Ent.	3.80 x 2.40 m
M.bedroom	3.60 x 3.70 m
M.bathroom	1.70 x 2.20 m
Bathroom	1.45 x 2.00 m



5<sup>th</sup> Floor



**Disclaimer**

Diagrams are not to scale and are for illustrative purposes only. All renderings and landscaping visuals, materials, and facades are for indicative purposes only and subject to change. Actual areas may vary from the stated figures. All dimensions are measured to structural elements. HYDE PARK reserves the right to make non-fundamental changes to the design provided herein without prior notice.



## Finishing Specifications & Facilities

### Entrance and Reception (Foyer)

- Floor High Quality local Ceramic
- Walls High quality Paint (Off-white)
- Ceiling High quality Paint White
- Skirting High Quality local Ceramic

### Bedroom / Living Room

- Floor High Quality local Ceramic
- Walls High quality Paint (Off-white)
- Ceiling High quality Paint White
- Skirting High Quality local Ceramic

### Kitchen

- Floor High quality local ceramic
- Walls High quality local ceramic
- Other walls High quality paint
- Ceiling High quality White Paint

### Bathrooms

- Floor High quality local ceramic
- Walls High quality local ceramic
- Ceiling High quality paint
- Sanitary Ware High quality white Local sanitary fixtures- chrome mixers

### Nanny's Room (if available)

- Floor High quality local ceramic
- Walls High quality Paint (Off-white)
- Ceiling High quality Paint (white)
- Skirting High quality local ceramic

### Nanny's Bathroom (if available)

- Floor High quality local ceramic
- Walls High quality local ceramic
- Ceiling High quality paint
- Sanitary Ware High quality white Local sanitary fixtures- chrome mixers

### Balcony

- Floor High quality local ceramic
- Walls Paint according to the design

### Accessible Roof (if available)

- Floor High quality local ceramic
- Walls High quality Paint according to the design

### Doors

- Main Door Woodwork stained oak veneer
- Bedroom doors Woodwork cladding painted doors

### Windows

- High quality Aluminum or PVC ( single glazing )

### Electro-mechanics

- Connecting the main cables to the meter place
- Installing Switches, key and covers only local high quality materials

### Network aspects

- Equipped for TV and Telephone networks

### Air conditioning

- Providing only unit placement and supplying both electrical & drainage connection

### Staircase (if available)

- Stairs and skirting High quality of local marble according to design style
- Handrail High quality according to design

### Private Garden ( If available )

- Floor Flattened with Sand without trees or Farming or Network irrigation.



— 16696 —

[www.hydeparkdevelopments.com](http://www.hydeparkdevelopments.com)