



 ZED STRIP

by **OGA**

**WE
DREAM
BIG**

“We design to make a difference and bring happiness.
We embrace creativity, innovation, sustainability
and harmony. We are more than developers.”

Chairperson

Naquib Sawiris

ABOUT ORA

We bring extraordinary visions to life, harnessing the natural beauty of landscapes and managing the development process from concept to realization to create rewarding and sustainable environments of uncompromising quality,

Ora developers has a proven track record of creating beautiful environments that balance exceptional thinking with enduringly sensitive design.

We cherish the natural world around us, taking great care to design, develop and construct high quality environments that not only sit comfortably within their surroundings, but have sustainability at their core. Our developments bring opportunities for all while offering a wide range of enjoyable lifestyle experiences.

ABOUT ZED

Zed brings you projects that inhabit the urban areas of Cairo to bring you luxurious real estate in addition to a brilliantly constructed landscape that interconnects you with peaceful living within your standards.

A portfolio of versatile yet coherent projects such as Zed El Sheikh Zayed, Zed Strip El Sheikh Zayed, and Zed East that present architectural sensations in each section.

Bridging concepts of modernity and nature in one environment, ZED brings the true meaning of living in harmony to the residents of Cairo.

ZED STRIP

As we remain focused on constructing a vision filled with luxury and sustainability within a community, we introduce the Zed Strip, affirming the possibilities of merging convenience while maintaining quality in a versatile and luxurious complex.

The Zed Strip, being the newest addition to our Zed East entity, strategically connects all your everyday needs in one coherent environment.

Featuring a co-working space, banks, shops and dining areas. Placing entertainment, professionalism, and convenience.

ZED STRIP EAST

Land Area: 134,400 sqm (32 feddan)
Total Built-Up Area: 168,000 sqm
No. of Floors: G+6 & G+7



OFFICES: 138,00 sqm



RETAIL: 30,00 sqm

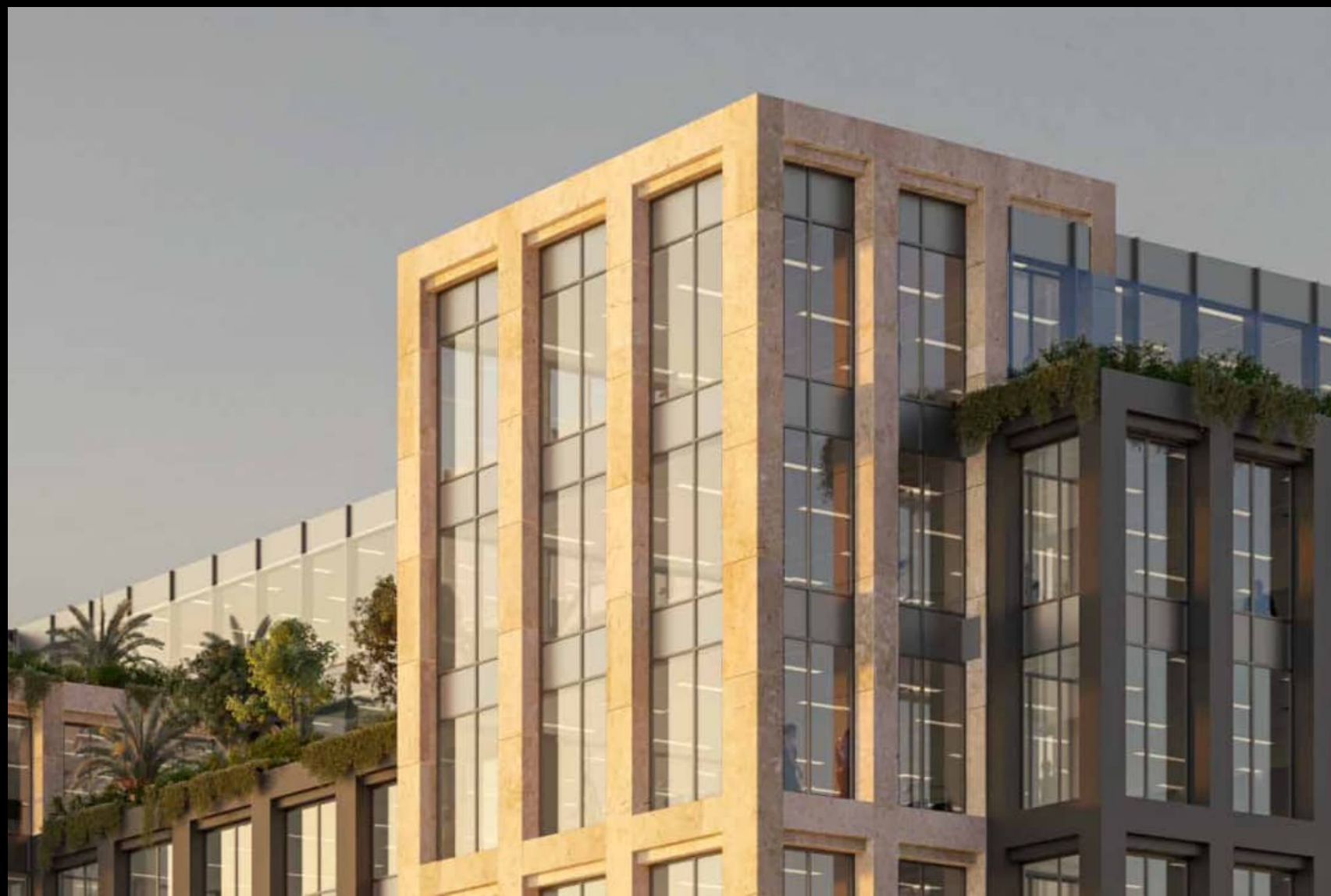










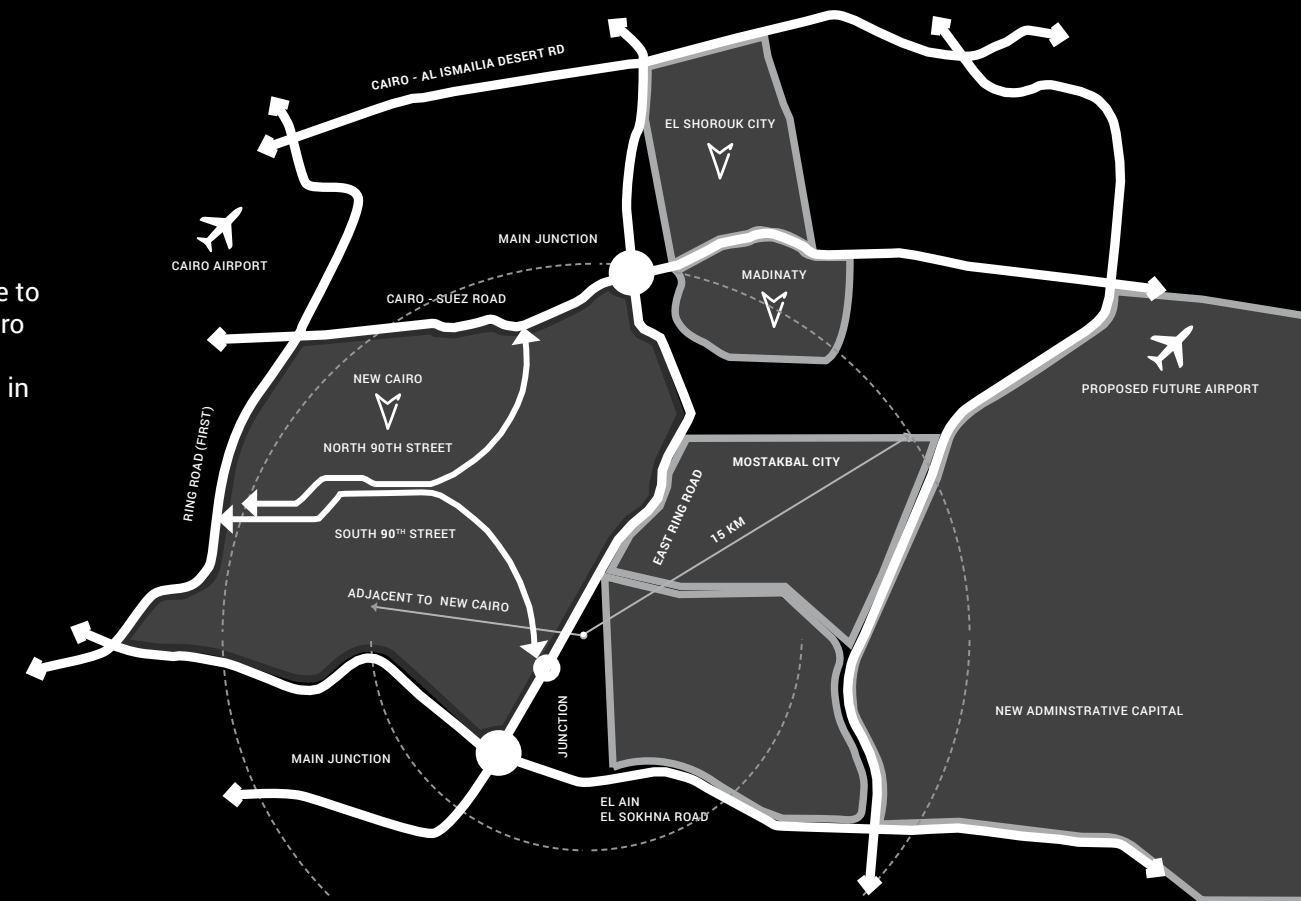






LOCATION

The Zed Strip is the newest addition to our Zed East entity, placed in a unique location in New Cairo and near the new administrative capital. Placing emphasis upon creating popularity and convenience to the different residents located in New Cairo will be considered an intersectional stop. Bringing you a new experience integrated in the heart of the future business world.



ZED EAST MASTER PLAN



STRIP MASTER PLAN

“At the heart of the Zed East Masterplan is the Commercial campus with over 130,000 m² of prime office space occupying 0.5 km of frontage onto the East Ring Road. Formed into a grand crescent that sweeps back from the highway the development has an unmistakable presence, but it is what lies behind that gives the campus its heart and soul. The office buildings frame a ribbon of interconnected courtyards and green plazas which are home to over 30,000 m² of retail, leisure, café, restaurant spaces and a supermarket so you have everything you need on your doorstep. All buildings are connected by basement parking and an additional parking structure at the rear of the site means there will be ample covered parking at any time of the day or night. To the South the campus opens out onto the expansive grounds of the Zed East Club with excellent views over the football pitches and facilities”





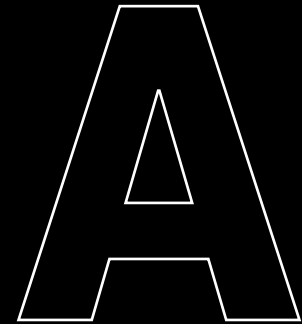
FACILITIES AND AMENITIES

The Zed Strip introduces the essence of bringing a community together, creating an experience of movement and integration while remaining in the confines of your area of living. Everything you need for your day-to-day needs. From shopping, dining, facilities (supermarkets & pharmacies) to a kid's area, and entertainment outlets including a dedicated underground and parking building; all in one single stroll.

FLOOR PLANS



BUILDING A MASTER PLAN



BUILDING A FIRST FLOOR

	Room	Dimensions	Area	Terrace
A	Office	10.20m x 28.35m	387 sqm	29 sqm
B	Office	7.75m x 15.90m	166 sqm	
C	Office	7.75m x 13.80m	144 sqm	
D	Office	7.75m x 12.95m	150 sqm	
E	Office	7.75m x 12.95m	150 sqm	
F	Office	7.75m x 15.00m	157 sqm	
G	Office	7.75m x 11.40m	131 sqm	
H	Office	10.10m x 30.20m	381 sqm	17 sqm
I	Office	7.75m x 9.35m	100 sqm	36 sqm
J	Office	7.75m x 8.35m	90 sqm	45 sqm
K	Office	7.75m x 9.35m	100 sqm	35 sqm
L	Office	7.55m x 8.35m	88 sqm	37 sqm



Note:

- Terraces are not included in area.
- Offices include provision for wet areas, which are to be executed by the Client if needed in pre-approved locations.
- Architectural plans and perspectives might be modified according to the final design and authorities regulations.
- Internal dimensions are linked to the structural elements and include plaster and wall finishes thickness.

BUILDING A

SECOND FLOOR

	Room	Dimensions	Area
A	Office	10.20m x 28.35m	387 sqm
B	Office	7.75m x 15.90m	166 sqm
C	Office	7.75m x 13.75m	144 sqm
D	Office	7.75m x 12.95m	150 sqm
E	Office	7.75m x 12.95m	150 sqm
F	Office	7.75m x 15.00m	157 sqm
G	Office	7.75m x 11.40m	131 sqm
H	Office	10.10m x 30.20m	381 sqm
I	Office	7.75m x 9.35m	100 sqm
J	Office	7.75m x 8.35m	90 sqm
K	Office	7.75m x 9.35m	100 sqm
L	Office	7.55m x 8.35m	88 sqm



Note:

- Terraces are not included in area.
- Offices include provision for wet areas, which are to be executed by the Client if needed in pre-approved locations.
- Architectural plans and perspectives might be modified according to the final design and authorities regulations.
- Internal dimensions are linked to the structural elements and include plaster and wall finishes thickness.

BUILDING A

THIRD FLOOR

	Room	Dimensions	Area
A	Office	10.20m x 28.35m	387 sqm
B	Office	7.75m x 15.90m	166 sqm
C	Office	7.75m x 13.75m	144 sqm
D	Office	7.75m x 12.95m	150 sqm
E	Office	7.75m x 12.95m	150 sqm
F	Office	7.75m x 15.00m	157 sqm
G	Office	7.75m x 11.40m	131 sqm
H	Office	10.10m x 30.20m	381 sqm
I	Office	7.75m x 9.35m	100 sqm
J	Office	7.75m x 8.35m	90 sqm
K	Office	7.75m x 9.35m	100 sqm
L	Office	7.55m x 8.35m	88 sqm



Note:

- Terraces are not included in area.
- Offices include provision for wet areas, which are to be executed by the Client if needed in pre-approved locations.
- Architectural plans and perspectives might be modified according to the final design and authorities regulations.
- Internal dimensions are linked to the structural elements and include plaster and wall finishes thickness.

BUILDING A

FOURTH FLOOR

	Room	Dimensions	Area
A	Office	10.20m x 28.35m	387 sqm
B	Office	7.75m x 15.90m	166 sqm
C	Office	7.75m x 13.75m	144 sqm
D	Office	7.75m x 12.95m	150 sqm
E	Office	7.75m x 12.95m	150 sqm
F	Office	7.75m x 15.00m	157 sqm
G	Office	7.75m x 11.40m	131 sqm
H	Office	10.10m x 30.20m	381 sqm
I	Office	7.75m x 9.35m	100 sqm
J	Office	7.75m x 8.35m	90 sqm
K	Office	7.75m x 9.35m	100 sqm
L	Office	7.55m x 8.35m	88 sqm



Note:

- Terraces are not included in area.
- Offices include provision for wet areas, which are to be executed by the Client if needed in pre-approved locations.
- Architectural plans and perspectives might be modified according to the final design and authorities regulations.
- Internal dimensions are linked to the structural elements and include plaster and wall finishes thickness.

BUILDING A

FIFTH FLOOR

	Room	Dimensions	Area	Terrace
A	Office	26.00m x 26.45m	720 sqm	77 sqm
B	Office	31.75m x 15.00m	574 sqm	
C	Office	32.15m x 29.20m	618 sqm	41 sqm



Note:

- Terraces are not included in area.
- Offices include provision for wet areas, which are to be executed by the Client if needed in pre-approved locations.
- Architectural plans and perspectives might be modified according to the final design and authorities regulations.
- Internal dimensions are linked to the structural elements and include plaster and wall finishes thickness.

BUILDING A

SIXTH FLOOR

	Room	Dimensions	Area	Terrace
A	Office	26.00m x 26.45m	720 sqm	
B	Office	31.75m x 13.90m	546 sqm	21 sqm
C	Office	32.15m x 29.20m	618 sqm	



Note:

- Terraces are not included in area.
- Offices include provision for wet areas, which are to be executed by the Client if needed in pre-approved locations.
- Architectural plans and perspectives might be modified according to the final design and authorities regulations.
- Internal dimensions are linked to the structural elements and include plaster and wall finishes thickness.

BUILDING A

SEVENTH FLOOR

	Room	Dimensions	Area	Terrace
A	Office	26.00m x 26.45m	695 sqm	20 sqm
B	Office	31.75m x 13.95m	446 sqm	79 sqm
C	Office	8.15m x 29.20m	320 sqm	19 sqm



Note:

- Terraces are not included in area.
- Offices include provision for wet areas, which are to be executed by the Client if needed in pre-approved locations.
- Architectural plans and perspectives might be modified according to the final design and authorities regulations.
- Internal dimensions are linked to the structural elements and include plaster and wall finishes thickness.

BUILDING B

MASTER PLAN

B



BUILDING B

FIRST FLOOR

	Room	Dimensions	Area	Terrace
A	Office	13.20m x 8.80m	152 sqm	71 sqm
B	Office	7.75m x 9.65m	111 sqm	18 sqm
C	Office	7.75m x 8.35m	96 sqm	28 sqm
D	Office	5.70m x 8.35m	72 sqm	21 sqm
E	Office	7.75m x 6.65m	92 sqm	41 sqm
F	Office	9.80m x 16.75m	213 sqm	101 sqm
G	Office	9.45m x 9.25m	132 sqm	
H	Office	7.75m x 14.30m	160 sqm	
I	Office	7.75m x 15.30m	171 sqm	
J	Office	7.75m x 10.60m	131 sqm	
K	Office	12.50m x 16.90m	236 sqm	23 sqm

Note:

- Terraces are not included in area.
- Offices include provision for wet areas, which are to be executed by the Client if needed in pre-approved locations.
- Architectural plans and perspectives might be modified according to the final design and authorities regulations.
- Internal dimensions are linked to the structural elements and include plaster and wall finishes thickness.



BUILDING B

SECOND FLOOR

	Room	Dimensions	Area
A	Office	13.20m x 8.80m	152 sqm
B	Office	7.75m x 9.65m	111 sqm
C	Office	7.75m x 8.35m	96 sqm
D	Office	7.75m x 8.35m	97 sqm
E	Office	7.75m x 6.65m	92 sqm
F	Office	9.80m x 16.75m	213 sqm
G	Office	9.45m x 9.25m	132 sqm
H	Office	7.75m x 14.30m	160 sqm
I	Office	7.75m x 15.30m	171 sqm
J	Office	7.75m x 10.60m	131 sqm
K	Office	12.50m x 16.90m	236 sqm



Note:

- Terraces are not included in area.
- Offices include provision for wet areas, which are to be executed by the Client if needed in pre-approved locations.
- Architectural plans and perspectives might be modified according to the final design and authorities regulations.
- Internal dimensions are linked to the structural elements and include plaster and wall finishes thickness.

BUILDING B

THIRD FLOOR

	Room	Dimensions	Area
A	Office	13.20m x 8.80m	152 sqm
B	Office	7.75m x 9.65m	111 sqm
C	Office	7.75m x 8.35m	96 sqm
D	Office	7.75m x 8.35m	97 sqm
E	Office	7.75m x 6.65m	92 sqm
F	Office	9.80m x 16.75m	213 sqm
G	Office	9.45m x 9.25m	132 sqm
H	Office	7.75m x 14.30m	160 sqm
I	Office	7.75m x 15.30m	171 sqm
J	Office	7.75m x 10.60m	131 sqm
K	Office	12.50m x 16.90m	236 sqm



Note:

- Terraces are not included in area.
- Offices include provision for wet areas, which are to be executed by the Client if needed in pre-approved locations.
- Architectural plans and perspectives might be modified according to the final design and authorities regulations.
- Internal dimensions are linked to the structural elements and include plaster and wall finishes thickness.

BUILDING B

FOURTH FLOOR

	Room	Dimensions	Area
A	Office	13.20m x 8.80m	152 sqm
B	Office	7.75m x 9.65m	111 sqm
C	Office	7.75m x 8.35m	96 sqm
D	Office	7.75m x 8.35m	97 sqm
E	Office	7.75m x 6.65m	92 sqm
F	Office	9.80m x 16.75m	213 sqm
G	Office	9.45m x 9.25m	132 sqm
H	Office	8.60m x 14.30m	160 sqm
I	Office	7.75m x 15.30m	171 sqm
J	Office	7.75m x 10.60m	131 sqm
K	Office	12.50m x 16.90m	236 sqm



Note:

- Terraces are not included in area.
- Offices include provision for wet areas, which are to be executed by the Client if needed in pre-approved locations.
- Architectural plans and perspectives might be modified according to the final design and authorities regulations.
- Internal dimensions are linked to the structural elements and include plaster and wall finishes thickness.

BUILDING B

FIFTH FLOOR

	Room	Dimensions	Area	Terrace
A	Office	13.20m x 8.80m	152 sqm	
B	Office	7.75m x 9.65m	111 sqm	
C	Office	7.75m x 8.35m	96 sqm	
D	Office	7.75m x 8.35m	97 sqm	
E	Office	7.75m x 6.65m	92 sqm	
F	Office	9.80m x 16.75m	213 sqm	
G	Office	9.45m x 9.25m	132 sqm	
H	Office	8.60m x 14.30m	160 sqm	
I	Office	7.75m x 15.30m	171 sqm	
J	Office	7.75m x 7.80m	99 sqm	23 sqm
K	Office	12.50m x 16.90m	236 sqm	



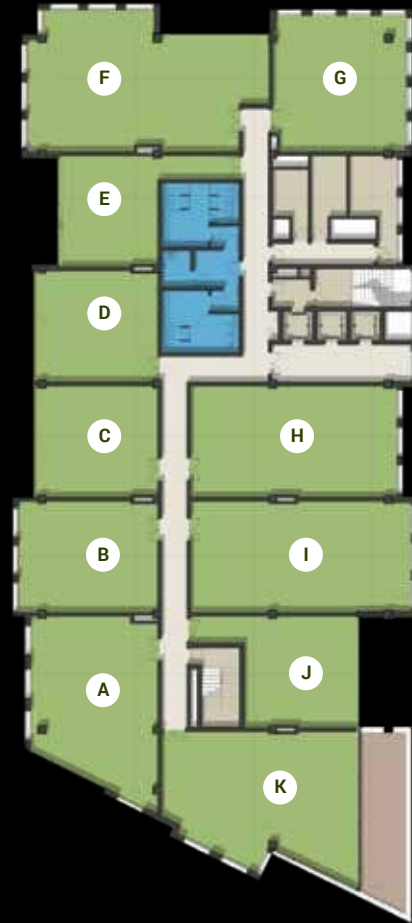
Note:

- Terraces are not included in area.
- Offices include provision for wet areas, which are to be executed by the Client if needed in pre-approved locations.
- Architectural plans and perspectives might be modified according to the final design and authorities regulations.
- Internal dimensions are linked to the structural elements and include plaster and wall finishes thickness.

BUILDING B

SIXTH FLOOR

	Room	Dimensions	Area	Terrace
A	Office	13.20m x 8.80m	152 sqm	
B	Office	7.75m x 9.65m	111 sqm	
C	Office	7.75m x 8.35m	96 sqm	
D	Office	7.75m x 8.35m	97 sqm	
E	Office	7.75m x 6.95m	92 sqm	
F	Office	9.80m x 16.75m	210 sqm	
G	Office	9.45m x 9.25m	132 sqm	
H	Office	8.60m x 14.30m	160 sqm	
I	Office	7.75m x 15.30m	171 sqm	
J	Office	7.75m x 7.80m	99 sqm	
K	Office	10.50m x 13.60m	176 sqm	46 sqm



Note:

- Terraces are not included in area.
- Offices include provision for wet areas, which are to be executed by the Client if needed in pre-approved locations.
- Architectural plans and perspectives might be modified according to the final design and authorities regulations.
- Internal dimensions are linked to the structural elements and include plaster and wall finishes thickness.

BUILDING B

SEVENTH FLOOR

	Room	Dimensions	Area	Terrace
A	Office	13.20m x 8.80m	152 sqm	
B	Office	7.75m x 8.60m	96 sqm	11 sqm
C	Office	7.75m x 8.35m	96 sqm	
D	Office	7.75m x 8.35m	97 sqm	
E	Office	7.75m x 6.95m	92 sqm	
F	Office	9.80m x 16.75m	210 sqm	
G	Office	8.10m x 6.90m	82 sqm	37 sqm
J	Office	7.75m x 7.80m	99 sqm	
K	Office	10.50m x 13.60m	176 sqm	



Note:

- Terraces are not included in area.
- Offices include provision for wet areas, which are to be executed by the Client if needed in pre-approved locations.
- Architectural plans and perspectives might be modified according to the final design and authorities regulations.
- Internal dimensions are linked to the structural elements and include plaster and wall finishes thickness.

BUILDING C

MASTER PLAN



BUILDING C

FIRST FLOOR

	Room	Dimensions	Area	Terrace
A	Office	9.00m x 16.75m	187 sqm	
B	Office	7.70m x 13.85m	127 sqm	35 sqm
C	Office	7.75m x 14.75m	166 sqm	28 sqm
D	Office	7.75m x 14.75m	165 sqm	26 sqm
E	Office	5.80m x 9.65m	84 sqm	18 sqm
F	Office	7.75m x 7.65m	102 sqm	39 sqm
G	Office	9.45m x 16.80m	218 sqm	33 sqm
H	Office	9.70m x 9.65m	137 sqm	
I	Office	7.75m x 8.30m	96 sqm	
J	Office	7.75m x 7.30m	85 sqm	
K	Office	7.75m x 8.80m	102 sqm	
L	Office	9.45m x 8.35m	119 sqm	

Note:

- Terraces are not included in area.
- Offices include provision for wet areas, which are to be executed by the Client if needed in pre-approved locations.
- Architectural plans and perspectives might be modified according to the final design and authorities regulations.
- Internal dimensions are linked to the structural elements and include plaster and wall finishes thickness.



BUILDING C

SECOND FLOOR

	Room	Dimensions	Area
A	Office	9.00m x 16.75m	187 sqm
B	Office	7.70m x 13.85m	127 sqm
C	Office	7.75m x 14.75m	166 sqm
D	Office	7.75m x 14.75m	165 sqm
E	Office	7.75m x 9.65m	125 sqm
F	Office	7.75m x 7.65m	102 sqm
G	Office	9.45m x 16.80m	218 sqm
H	Office	9.70m x 9.65m	137 sqm
I	Office	7.75m x 8.30m	96 sqm
J	Office	7.75m x 7.30m	85 sqm
K	Office	7.75m x 8.80m	102 sqm
L	Office	9.45m x 8.35m	119 sqm

Note:

- Terraces are not included in area.
- Offices include provision for wet areas, which are to be executed by the Client if needed in pre-approved locations.
- Architectural plans and perspectives might be modified according to the final design and authorities regulations.
- Internal dimensions are linked to the structural elements and include plaster and wall finishes thickness.



BUILDING C

THIRD FLOOR

	Room	Dimensions	Area
A	Office	9.00m x 16.75m	187 sqm
B	Office	7.70m x 13.85m	127 sqm
C	Office	7.75m x 14.75m	166 sqm
D	Office	7.75m x 14.75m	165 sqm
E	Office	7.75m x 9.65m	125 sqm
F	Office	7.75m x 7.65m	102 sqm
G	Office	9.45m x 16.80m	218 sqm
H	Office	9.70m x 9.65m	137 sqm
I	Office	7.75m x 8.30m	96 sqm
J	Office	7.75m x 7.30m	85 sqm
K	Office	7.75m x 8.80m	102 sqm
L	Office	9.45m x 8.35m	119 sqm

Note:

- Terraces are not included in area.
- Offices include provision for wet areas, which are to be executed by the Client if needed in pre-approved locations.
- Architectural plans and perspectives might be modified according to the final design and authorities regulations.
- Internal dimensions are linked to the structural elements and include plaster and wall finishes thickness.



BUILDING C

FOURTH FLOOR

	Room	Dimensions	Area	Terrace
A	Office	9.00m x 16.75m	187 sqm	
B	Office	7.70m x 13.85m	127 sqm	
C	Office	7.75m x 14.75m	166 sqm	
D	Office	7.75m x 14.75m	165 sqm	
E	Office	7.75m x 9.65m	125 sqm	
F	Office	7.75m x 5.75m	78 sqm	13 sqm
G	Office	9.45m x 16.80m	218 sqm	
H	Office	9.70m x 9.65m	137 sqm	
I	Office	7.75m x 8.30m	96 sqm	
J	Office	7.75m x 7.30m	85 sqm	
K	Office	7.75m x 8.80m	102 sqm	
L	Office	9.45m x 8.35m	119 sqm	

Note:

- Terraces are not included in area.
- Offices include provision for wet areas, which are to be executed by the Client if needed in pre-approved locations.
- Architectural plans and perspectives might be modified according to the final design and authorities regulations.
- Internal dimensions are linked to the structural elements and include plaster and wall finishes thickness.



BUILDING C

FIFTH FLOOR

	Room	Dimensions	Area	Terrace
A	Office	9.00m x 16.75m	187 sqm	
B	Office	7.70m x 13.85m	127 sqm	
C	Office	7.75m x 14.75m	166 sqm	
D	Office	7.75m x 13.45m	151 sqm	7 sqm
E	Office	7.75m x 9.65m	125 sqm	
F	Office	7.75m x 5.75m	78 sqm	
G	Office	9.45m x 16.80m	197 sqm	12 sqm
H	Office	9.70m x 9.65m	137 sqm	
I	Office	7.75m x 8.30m	96 sqm	
J	Office	7.75m x 7.30m	85 sqm	
K	Office	7.75m x 8.80m	102 sqm	
L	Office	9.45m x 8.35m	119 sqm	

Note:

- Terraces are not included in area.
- Offices include provision for wet areas, which are to be executed by the Client if needed in pre-approved locations.
- Architectural plans and perspectives might be modified according to the final design and authorities regulations.
- Internal dimensions are linked to the structural elements and include plaster and wall finishes thickness.



BUILDING C

SIXTH FLOOR

	Room	Dimensions	Area	Terrace
A	Office	8.10m x 13.45m	130 sqm	34 sqm
B	Office	7.70m x 11.35m	98 sqm	19 sqm
C	Office	7.75m x 14.75m	166 sqm	
D	Office	7.75m x 13.45m	151 sqm	
E	Office	7.75m x 9.65m	125 sqm	
F	Office	7.75m x 5.75m	78 sqm	
G	Office	9.45m x 16.80m	197 sqm	
H	Office	9.70m x 9.65m	137 sqm	
I	Office	7.75m x 8.30m	96 sqm	
J	Office	7.75m x 7.30m	85 sqm	
K	Office	7.75m x 8.80m	102 sqm	
L	Office	9.45m x 7.80m	115 sqm	

Note:

- Terraces are not included in area.
- Offices include provision for wet areas, which are to be executed by the Client if needed in pre-approved locations.
- Architectural plans and perspectives might be modified according to the final design and authorities regulations.
- Internal dimensions are linked to the structural elements and include plaster and wall finishes thickness.



BUILDING C

SEVENTH FLOOR

	Room	Dimensions	Area	Terrace
A	Office	8.10m x 13.45m	130 sqm	
B	Office	7.70m x 11.35m	98 sqm	
C	Office	7.75m x 14.75m	166 sqm	
D	Office	7.75m x 11.40m	125 sqm	15 sqm
E	Office	7.75m x 5.75m	79 sqm	30 sqm
F	Office	7.75m x 5.75m	78 sqm	
G	Office	9.45m x 16.80m	197 sqm	
H	Office	7.60m x 9.60m	104 sqm	20 sqm
K	Office	7.75m x 8.80m	102 sqm	
L	Office	9.45m x 7.80m	115 sqm	

Note:

- Terraces are not included in area.
- Offices include provision for wet areas, which are to be executed by the Client if needed in pre-approved locations.
- Architectural plans and perspectives might be modified according to the final design and authorities regulations.
- Internal dimensions are linked to the structural elements and include plaster and wall finishes thickness.



CALL CENTER | 15003

WEBSITE | zed-egypt.com

EMAIL | info@oradevelopers.com

SALES OFFICE |

EL SHEIKH ZAYED

Zayed Central Park, Gate 3.

WHITE BY THE WATERWAY

BUILDING B12 - SECOND FLOOR

NILE CITY TOWERS

2005c Nile City Towers, North Tower,

13th Floor, Cornich El Nile.

CONTACT US

by **OGA**

·All landscaping elements and interior/exterior furniture are shown for illustrative purposes only and are not legally binding.

They are also subject for modification based on construction requirements and authorities regulations.

·Architectural plans and perspectives might be modified according to the final design and authorities regulations.

·Internal dimensions are linked to the structural elements and include plaster and wall finishes thickness.

·Sold units do not include any of the shown interior/ exterior furniture, pools, trees or greenery.

 ZED STRIP — EAST

www.zed-egypt.com