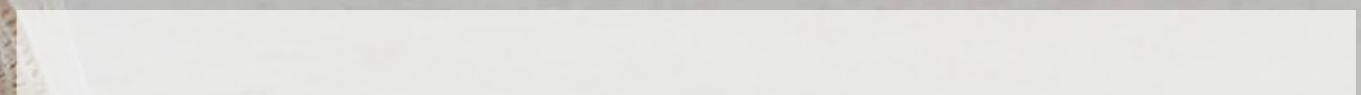
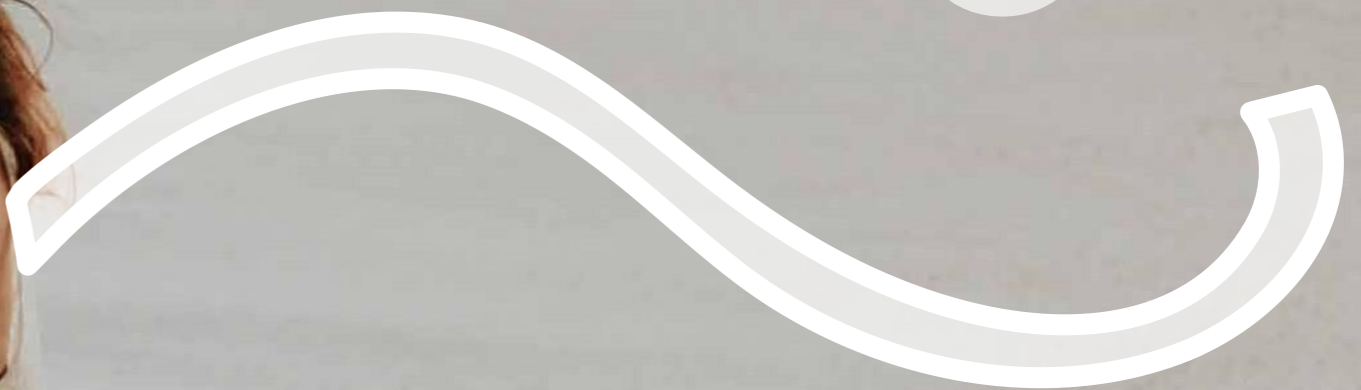


Telal  
**SHORES**  
EL SOKHNA





# MASTER PLAN

TELAL SHORES is located on the far west side of Telal El Sokhna project, where it stands out as the main exposure point for arrivals from the New Administrative Capital & Cairo.

With a total area of 88 Feddans, the project includes an array of various experiences that cater to the needs and wants of all family members.

-THE SHOWN MASTERPLAN AND ALL ITS RELEVANT CONTENTS ARE FOR ILLUSTRATIVE PURPOSES ONLY.

-ALL DIMENSIONS, LOCATIONS AND/OR ORIENTATIONS ARE SHOWN IN A CONCEPTUAL FORMAT AND ARE SUBJECT TO VARY AS PER FURTHER DETAILED STUDIES, ENGINEERING REQUIREMENTS AND/OR REGULATIONS.

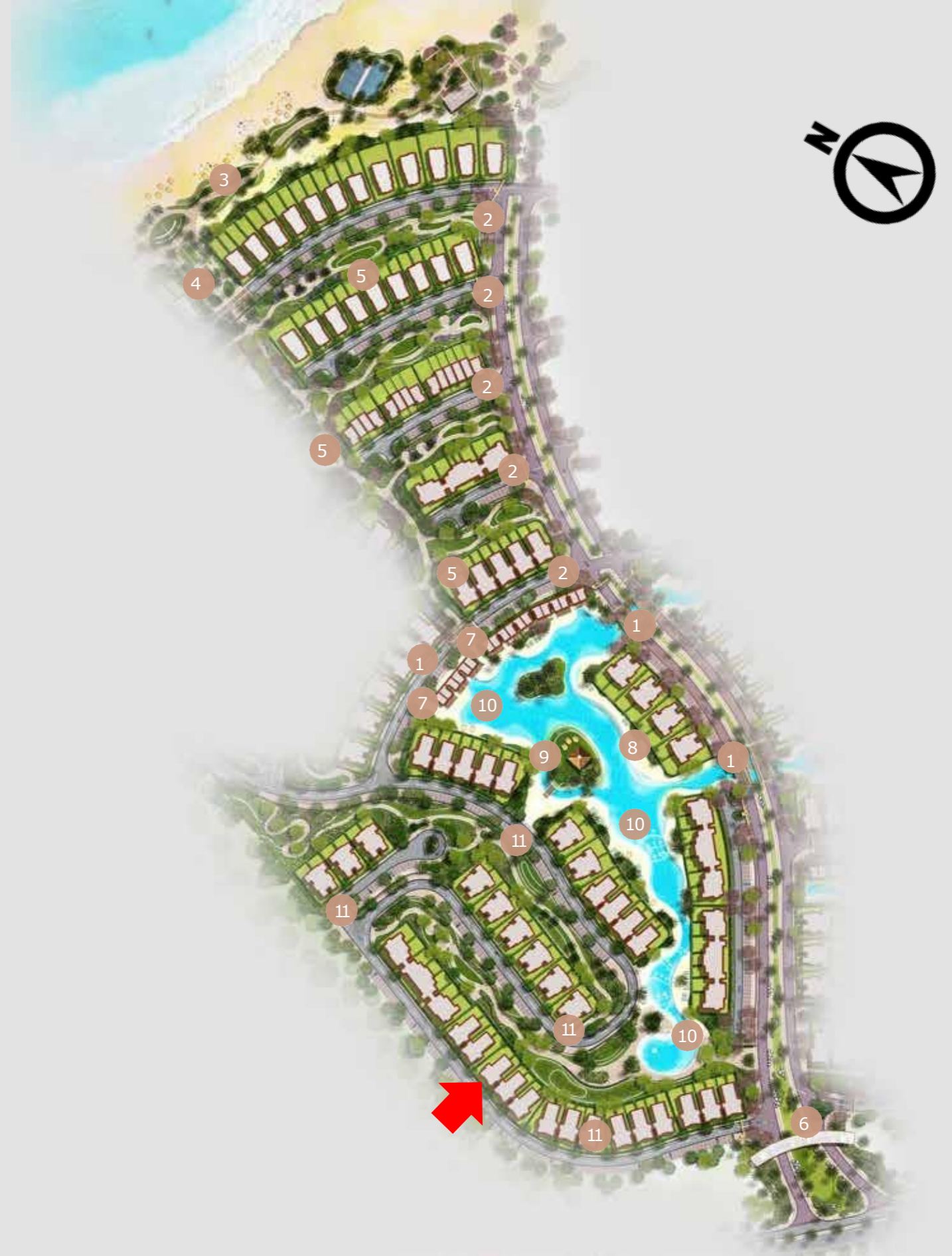


# TELAL SHORES PHASE ONE

- 1 Iconic Bridge
- 2 Access Gateways
- 3 Beach Front
- 4 Beach Gateway
- 5 Green Valleys
- 6 Main Gate
- 7 Lagoon Cabins
- 8 Island residence
- 9 Lagoon clubhouse
- 10 Swimmable Lagoon
- 11 Mountain Meandering Road

- THE SHOWN MASTERPLAN AND ALL ITS RELEVANT CONTENTS ARE FOR ILLUSTRATIVE PURPOSES ONLY.

- ALL DIMENSIONS, LOCATIONS AND/OR ORIENTATIONS ARE SHOWN IN A CONCEPTUAL FORMAT AND ARE SUBJECT TO VARY AS PER FURTHER DETAILED STUDIES, ENGINEERING REQUIREMENTS AND/OR REGULATIONS.





## LEVELS

ALL DIMENSIONAL LEVELS, LOCATIONS, AND ORIENTATIONS ARE SHOWN IN A CONCEPTUAL FORMAT AND ARE SUBJECT TO VARY AS PER FURTHER DETAILED STUDIES, ENGINEERING REQUIREMENTS AND/OR REGULATIONS.



## DIMENSIONS

ALL DIMENSIONAL LEVELS, LOCATIONS, AND ORIENTATIONS ARE SHOWN IN A CONCEPTUAL FORMAT AND ARE SUBJECT TO VARY AS PER FURTHER DETAILED STUDIES, ENGINEERING REQUIREMENTS AND/OR REGULATIONS.



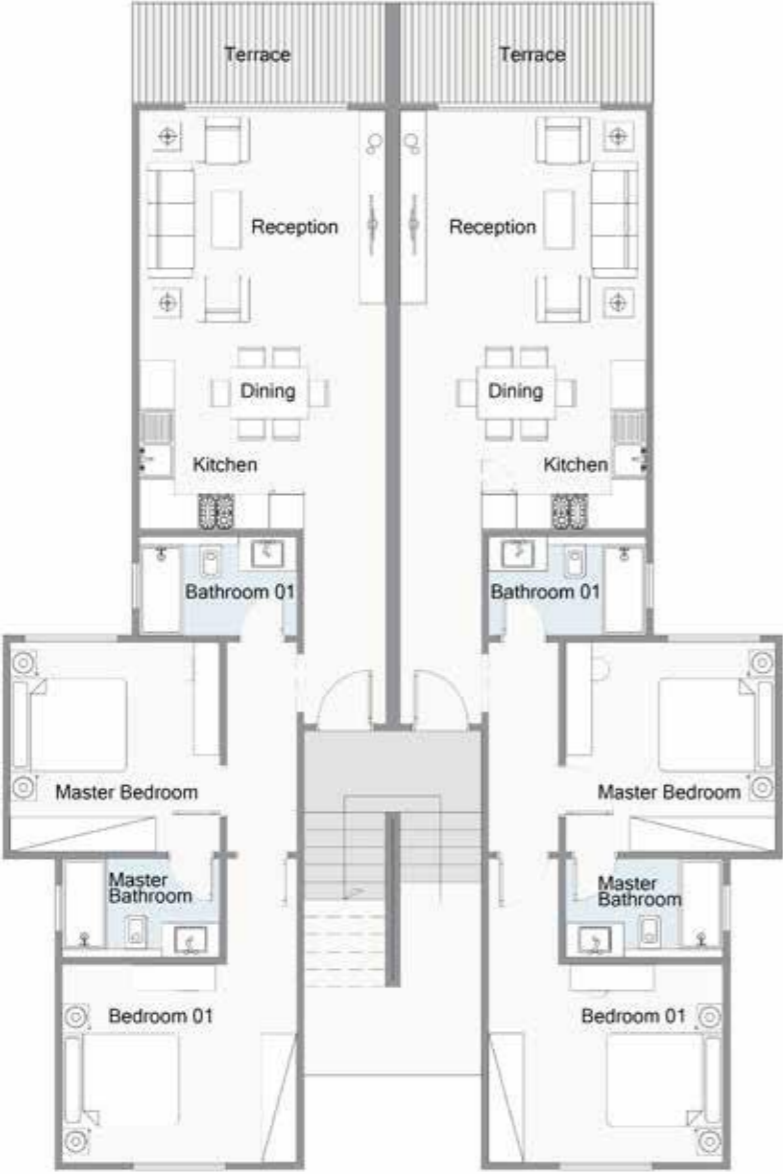


HORIZON CHALET



# HORIZON

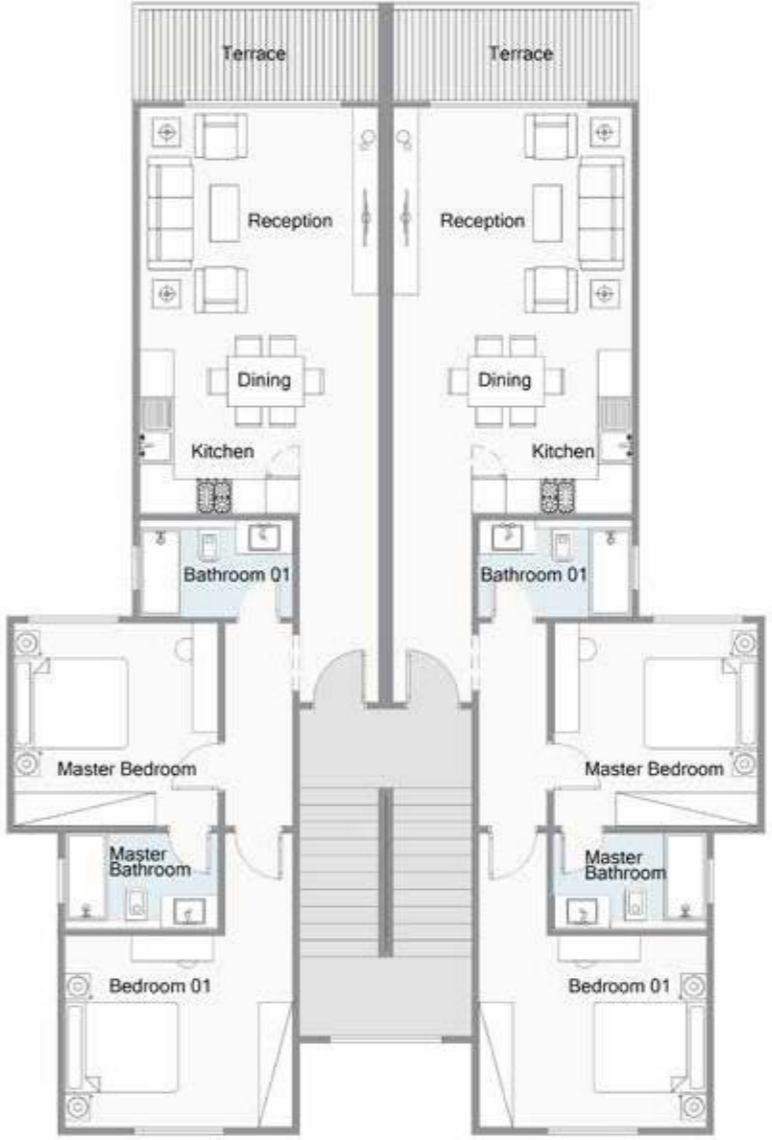
Ground Floor



- THE CEILING MATERIALS OF SOME TYPICAL TERRACES ARE WOODEN LIKE MATERIAL OR AS SHOWN IN THE RENDERS.
- CLADDING TYPE AND COLOR WILL BE SUBJECT TO AVAILABILITY AT THE TIME OF CONSTRUCTION.
- PLANTING SHOWN IS FOR ILLUSTRATIVE PURPOSES ONLY.
- DRAWINGS AND DIMENSIONS ARE FOR ILLUSTRATIVE PURPOSES AND ARE SUBJECT TO MODIFICATIONS AT THE DISCRETION OF THE DEVELOPER.

# HORIZON

Typical Floor (First/Second)



- THE CEILING MATERIALS OF SOME TYPICAL TERRACES ARE WOODEN LIKE MATERIAL OR AS SHOWN IN THE RENDERS.
- CLADDING TYPE AND COLOR WILL BE SUBJECT TO AVAILABILITY AT THE TIME OF CONSTRUCTION.
- PLANTING SHOWN IS FOR ILLUSTRATIVE PURPOSES ONLY.
- DRAWINGS AND DIMENSIONS ARE FOR ILLUSTRATIVE PURPOSES AND ARE SUBJECT TO MODIFICATIONS AT THE DISCRETION OF THE DEVELOPER.

## HORIZON UNIT C-E

Typical İlooi (İiisl'/Second)



## BUA 108 M<sup>2</sup>

- CONFİGURATION
- 2 Bedrooms (1Master)

Reception	4.05 x 4.25 M <sup>2</sup>
Kitchen & Dining	3.15 x 4.25 M <sup>2</sup>
Master bedroom	3.60 x 3.60 M <sup>2</sup>
Master bathroom	1.70 x 2.70 M <sup>2</sup>
Bedroom	3.40 x 4.05 M <sup>2</sup>
Bathroom	1.70 x 2.70 M <sup>2</sup>
Terrace	1.60 x 4.25 M <sup>2</sup>

- THE CEILING MATERIALS OF SOME TYPICAL TERRACES ARE WOODEN LIKE MATERIAL OR AS SHOWN IN THE RENDERS.
- CLADDING TYPE AND COLOR WILL BE SUBJECT TO AVAILABILITY AT THE TIME OF CONSTRUCTION.
- PLANTING SHOWN IS FOR ILLUSTRATIVE PURPOSES ONLY.
- DRAWINGS AND DIMENSIONS ARE FOR ILLUSTRATIVE PURPOSES AND ARE SUBJECT TO MODIFICATIONS AT THE DISCRETION OF THE DEVELOPER.



## HORIZON UNIT D-F

Typical İlooi (İiisl'/Second)



## BUA 108 M<sup>2</sup>

Reception	4.05 x 4.25 M <sup>2</sup>
Kitchen & Dining	3.15 x 4.25 M <sup>2</sup>
Master bedroom	3.60 x 3.60 M <sup>2</sup>
Master bathroom	1.70 x 2.70 M <sup>2</sup>
Bedroom	3.40 x 4.05 M <sup>2</sup>
Bathroom	1.70 x 2.70 M <sup>2</sup>
Terrace	1.60 x 4.25 M <sup>2</sup>

- THE CEILING MATERIALS OF SOME TYPICAL TERRACES ARE WOODEN LIKE MATERIAL OR AS SHOWN IN THE RENDERS.
- CLADDING TYPE AND COLOR WILL BE SUBJECT TO AVAILABILITY AT THE TIME OF CONSTRUCTION.
- PLANTING SHOWN IS FOR ILLUSTRATIVE PURPOSES ONLY.
- DRAWINGS AND DIMENSIONS ARE FOR ILLUSTRATIVE PURPOSES AND ARE SUBJECT TO MODIFICATIONS AT THE DISCRETION OF THE DEVELOPER.



**Installments Application**

Project Name	Telal El Sokhna
Phase	Shores
Unit Code	HZ-938-E

Unit Description	
Type	Horizon Chalet 2nd Floor
Area (sqm)	108m
Garden	X
Terrace	X
Unit value	5,800,000.00
Dis	-
Unit value After Dis	5,800,000

**Delivery Date after 4 years from sign the contract.**

<b>Total Downpayment 5%</b>	<b>290,000</b>	<b>22-Nov-23</b>
-----------------------------	----------------	------------------

installment no.	installment amount	date of installment
1	172,203.00	22-Feb-24
2	172,187.00	22-May-24
3	172,187.00	22-Aug-24
4	172,187.00	22-Nov-24
5	172,187.00	22-Feb-25
6	172,187.00	22-May-25
7	172,187.00	22-Aug-25
8	172,187.00	22-Nov-25
9	172,187.00	22-Feb-26
10	172,187.00	22-May-26
11	172,187.00	22-Aug-26
12	172,187.00	22-Nov-26
13	172,187.00	22-Feb-27
14	172,187.00	22-May-27
15	172,187.00	22-Aug-27
16	172,187.00	22-Nov-27
17	172,187.00	22-Feb-28
18	172,187.00	22-May-28
19	172,187.00	22-Aug-28
20	172,187.00	22-Nov-28
21	172,187.00	22-Feb-29
22	172,187.00	22-May-29
23	172,187.00	22-Aug-29
24	172,187.00	22-Nov-29
25	172,187.00	22-Feb-30
26	172,187.00	22-May-30
27	172,187.00	22-Aug-30
28	172,187.00	22-Nov-30
29	172,187.00	22-Feb-31
30	172,187.00	22-May-31
31	172,187.00	22-Aug-31
32	172,187.00	22-Nov-31
<b>Total</b>	<b>5,510,000</b>	

**\* Maintenance Deposit :**

Total Maintenance Value Per Unit 9%	130,500	Nov-24
	130,500	Nov-25
	130,500	Nov-26
	130,500	May-27
<b>Total</b>	<b>522,000</b>	

# DESIGN CONSULTANTS

Lab 59, ouí visionaíy aíchil'ec'l'uíe consull'anl', has cíaf'ed Telal Shoíes' modeín and func'líonal design, l'uíníng il' in'ó an aíchil'ec'l'uíal mas'l'eípiece.

Walk-In, ouí mas'l'eí planning consull'anl', has mel'iculously designed l'he haímoníous layoul' of Telal Shoíes, blending coasl'al u'íban fab'ícs wílh na'l'uíe.

Vanilla, ouí visual consull'anl', has added l'he final l'ouches l'ó showcase Telal Shoíes' beaul'y, enhancing il's appeal and píesen'al'íon.

